

# Glendale Plaza | Glendale, CA

NEC Glendale Ave & California Ave  
Approximately 3,466 SF Available  
**FOR LEASE**

**Bob Haas**

805.449.1804 ext. 103  
rhaas@cypress.net  
License No. 00870324

**Matt Haas**

805.449.1804 ext. 106  
mhaas@cypress.net  
License No. 01970296



# Glendale Plaza

Glendale, CA



## Property Highlights

- Approximately 3,466 SF available for lease
- Located across the street from the Glendale Fashion Center and Whole Foods
- Over 45,000 CPD at the intersection of Glendale Ave. & California Ave.

## Co-Tenants



## Area Retailers



### Bob Haas

805.449.1804 ext. 103  
rhaas@cypress.net  
License No. 00870324

### Matt Haas

805.449.1804 ext. 106  
mhaas@cypress.net  
License No. 01970296





# Glendale Plaza

Glendale, CA

Aerial



**Bob Haas**

805.449.1804 ext. 103  
rhaas@cypress.net  
License No. 00870324

**Matt Haas**

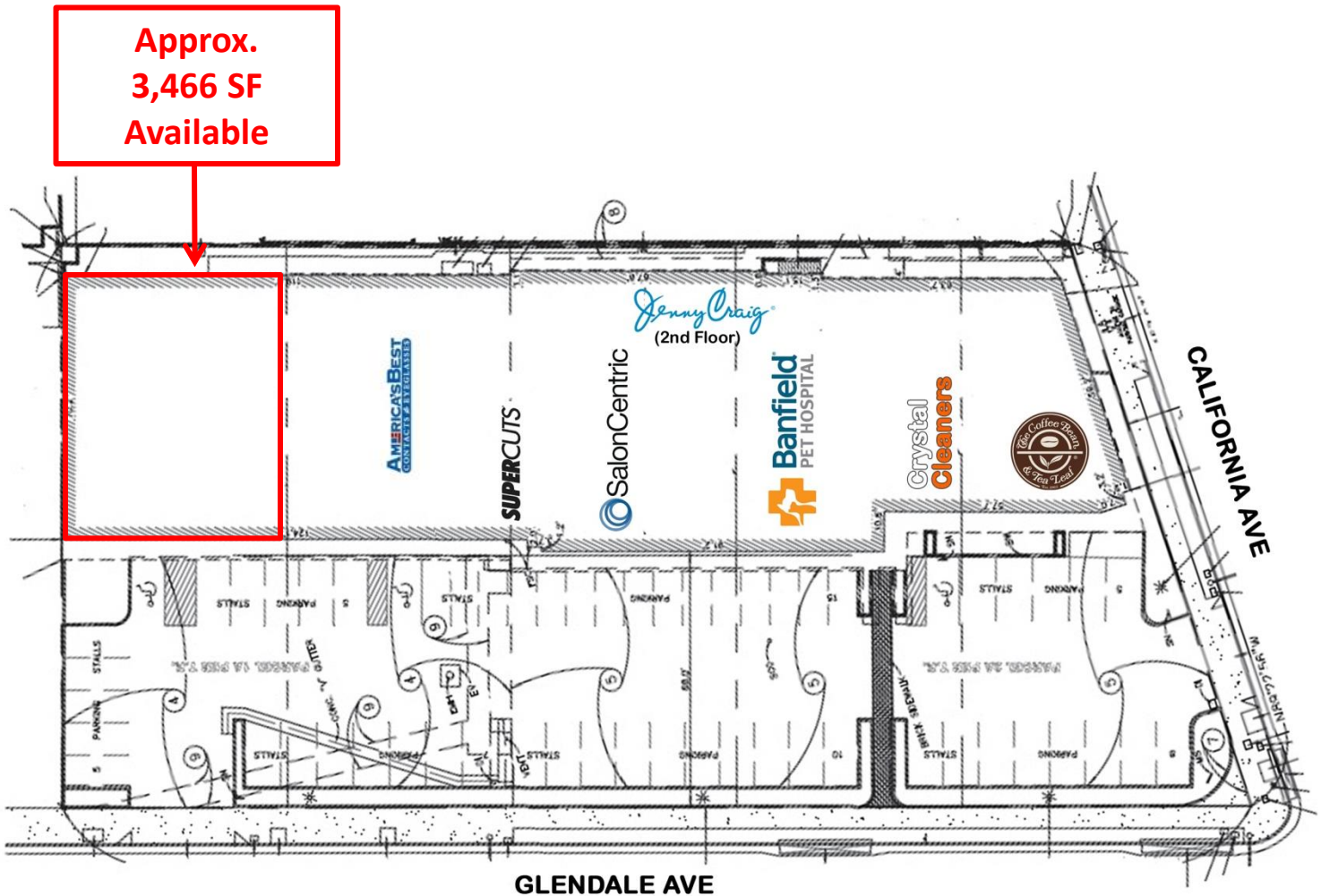
805.449.1804 ext. 106  
mhaas@cypress.net  
License No. 01970296



# Glendale Plaza

Glendale, CA

## Site Plan



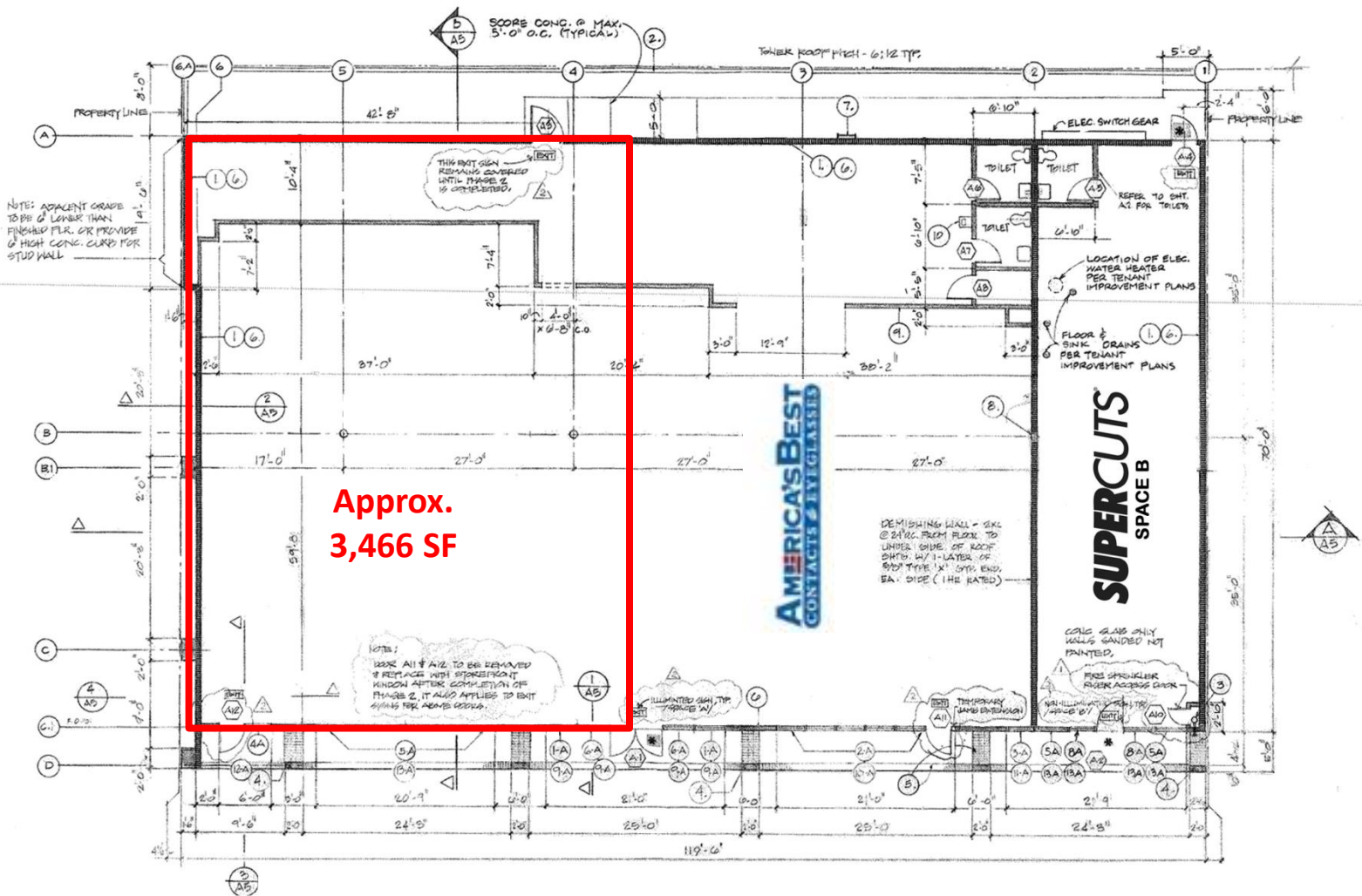
### Bob Haas

805.449.1804 ext. 103  
rhaas@cypress.net  
License No. 00870324

### Matt Haas

805.449.1804 ext. 106  
mhaas@cypress.net  
License No. 01970296

## Floor Pan



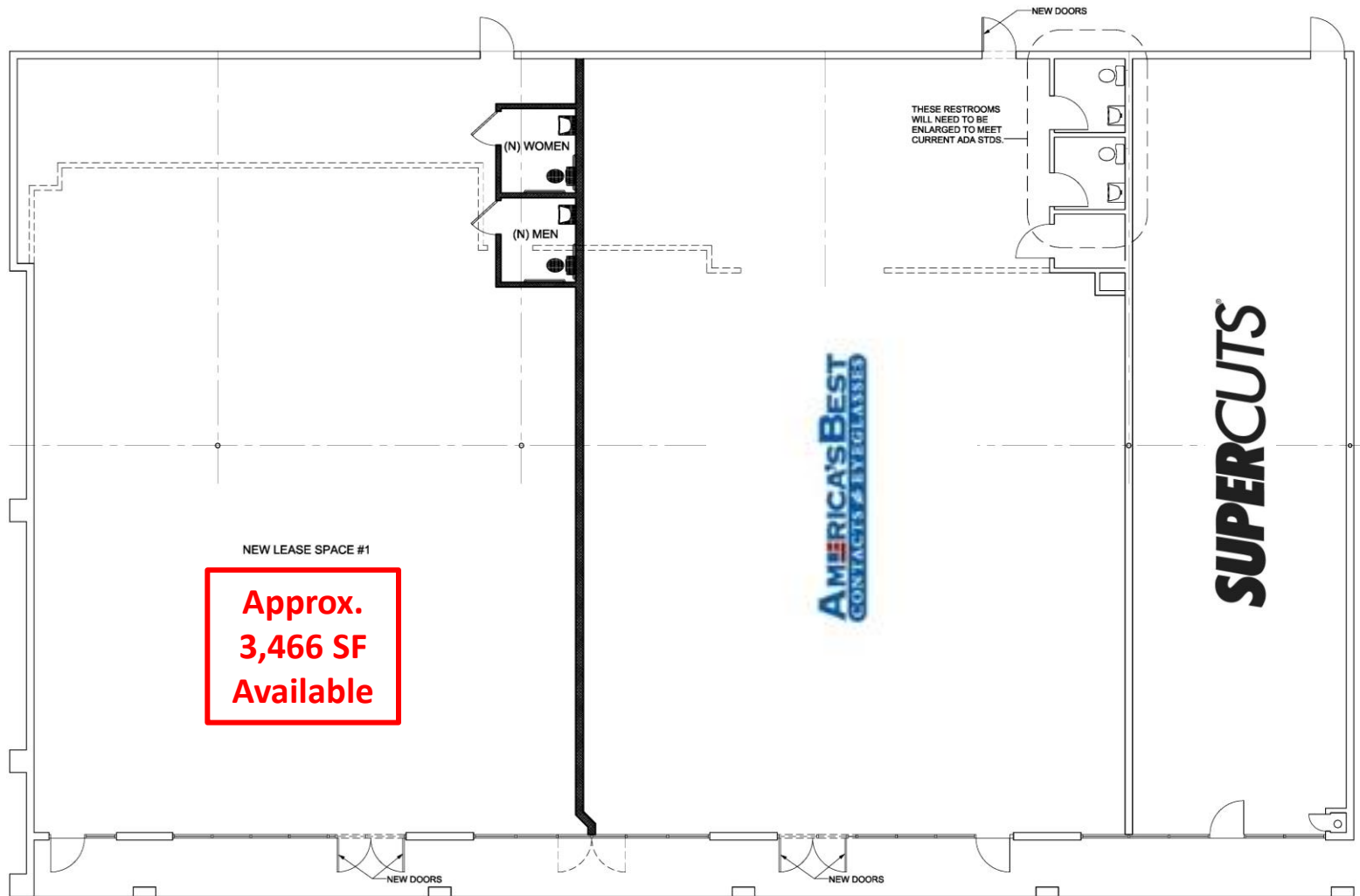
## Bob Haas

805.449.1804 ext. 103  
rhaas@cypress.net  
License No. 00870324

## Matt Haas

805.449.1804 ext. 106  
mhaas@cypress.net  
License No. 01970296

## Proposed Demising Plan



**Bob Haas**

805.449.1804 ext. 103  
rhaas@cypress.net  
License No. 00870324

**Matt Haas**

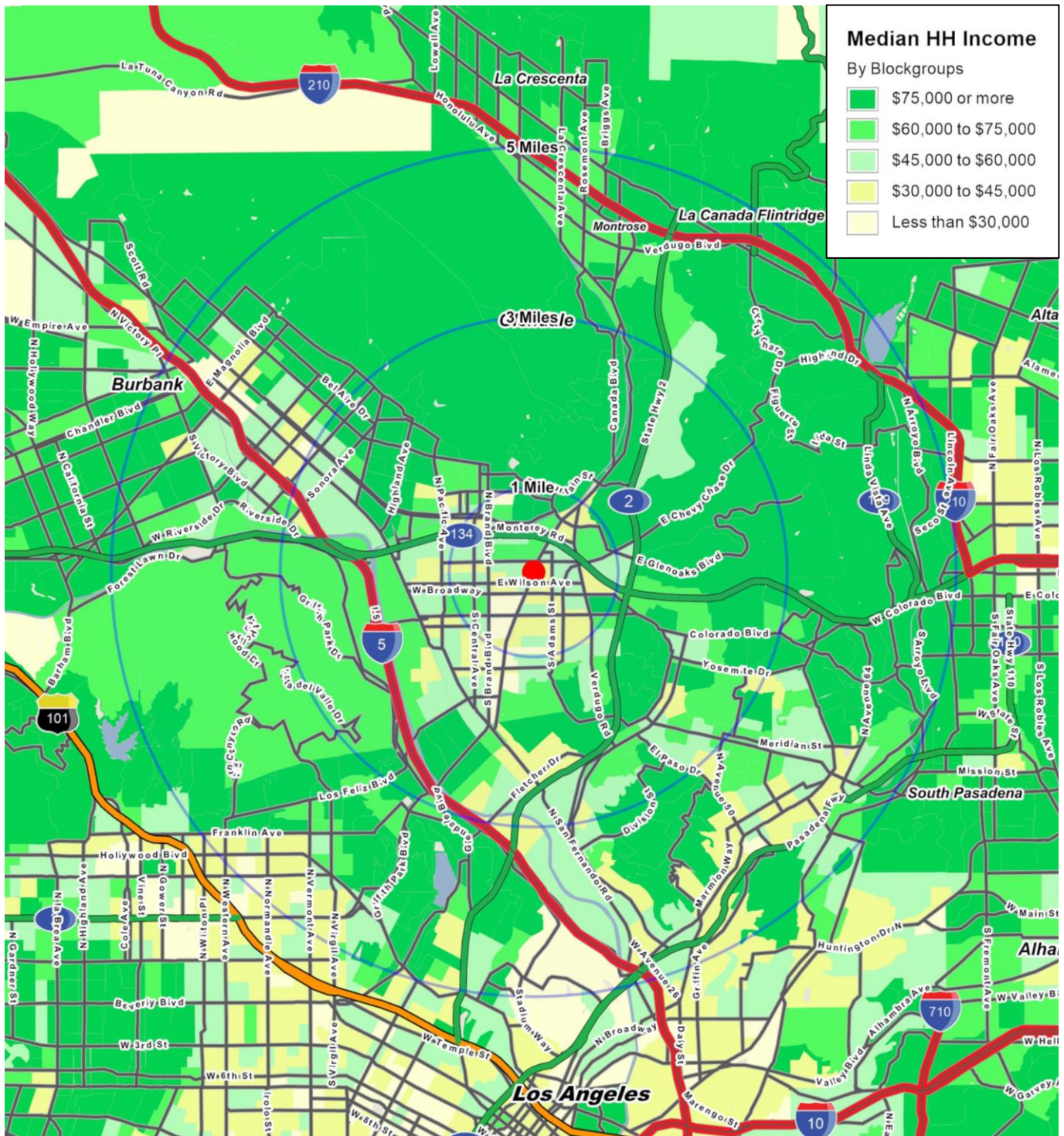
805.449.1804 ext. 106  
mhaas@cypress.net  
License No. 01970296



# Glendale Plaza

# Glendale, CA

## Demographics



**Bob Haas**

805.449.1804 ext. 103  
rhaas@cypress.net  
License No. 00870324

**Matt Haas**

805.449.1804 ext. 106  
mhaas@cypress.net  
License No. 01970296

# FULL PROFILE

2000-2010 Census, 2017 Estimates with 2022 Projections

Calculated using Weighted Block Centroid from Block Groups

Cypress Retail Group

Lat/Lon: 34.1500/-118.2457

RF1

## Glendale Ave & California Ave

Glendale, CA

1 Mile

3 Miles

5 Miles

POPULATION	2017 Estimated Population	62,204	230,703	543,719
	2022 Projected Population	64,079	237,984	561,535
	2010 Census Population	56,840	217,879	521,293
	2000 Census Population	58,012	223,856	535,546
	Projected Annual Growth 2017 to 2022	0.6%	0.6%	0.7%
	Historical Annual Growth 2000 to 2017	0.4%	0.2%	0.1%
HOUSEHOLDS	2017 Estimated Households	24,753	86,463	209,299
	2022 Projected Households	25,751	90,121	218,376
	2010 Census Households	22,366	80,734	198,537
	2000 Census Households	22,131	80,222	197,063
	Projected Annual Growth 2017 to 2022	0.8%	0.8%	0.9%
	Historical Annual Growth 2000 to 2017	0.7%	0.5%	0.4%
AGE	2017 Est. Population Under 10 Years	9.4%	10.0%	10.2%
	2017 Est. Population 10 to 19 Years	9.3%	10.1%	10.2%
	2017 Est. Population 20 to 29 Years	14.6%	14.0%	14.1%
	2017 Est. Population 30 to 44 Years	21.6%	21.7%	22.7%
	2017 Est. Population 45 to 59 Years	20.6%	20.8%	20.7%
	2017 Est. Population 60 to 74 Years	16.2%	15.8%	15.0%
	2017 Est. Population 75 Years or Over	8.3%	7.6%	7.0%
	2017 Est. Median Age	40.3	39.9	39.1
MARITAL STATUS & GENDER	2017 Est. Male Population	47.1%	48.1%	48.9%
	2017 Est. Female Population	52.9%	51.9%	51.1%
	2017 Est. Never Married	34.5%	36.8%	40.0%
	2017 Est. Now Married	43.6%	42.7%	40.0%
	2017 Est. Separated or Divorced	13.2%	13.7%	14.0%
	2017 Est. Widowed	8.7%	6.7%	5.9%
INCOME	2017 Est. HH Income \$200,000 or More	4.7%	8.4%	10.2%
	2017 Est. HH Income \$150,000 to \$199,999	4.6%	6.6%	6.9%
	2017 Est. HH Income \$100,000 to \$149,999	11.1%	14.8%	14.5%
	2017 Est. HH Income \$75,000 to \$99,999	11.7%	11.2%	11.3%
	2017 Est. HH Income \$50,000 to \$74,999	16.1%	15.5%	15.6%
	2017 Est. HH Income \$35,000 to \$49,999	13.5%	12.8%	12.2%
	2017 Est. HH Income \$25,000 to \$34,999	10.4%	8.9%	8.5%
	2017 Est. HH Income \$15,000 to \$24,999	15.1%	11.6%	10.5%
	2017 Est. HH Income Under \$15,000	12.8%	10.3%	10.3%
	2017 Est. Average Household Income	\$61,607	\$81,177	\$90,521
	2017 Est. Median Household Income	\$48,993	\$65,537	\$71,477
	2017 Est. Per Capita Income	\$24,545	\$30,501	\$34,953
	2017 Est. Total Businesses	3,703	10,783	23,273
	2017 Est. Total Employees	58,411	129,962	240,267

This report was produced using data from private and government sources deemed to be reliable. The information herein is provided without representation or warranty.



# FULL PROFILE

2000-2010 Census, 2017 Estimates with 2022 Projections

Calculated using Weighted Block Centroid from Block Groups

Cypress Retail Group

Lat/Lon: 34.1500/-118.2457

RF1

## Glendale Ave & California Ave

Glendale, CA

1 Mile

3 Miles

5 Miles

RACE	2017 Est. White	67.3%	61.3%	60.1%
	2017 Est. Black	2.6%	2.4%	2.9%
	2017 Est. Asian or Pacific Islander	17.2%	20.0%	17.6%
	2017 Est. American Indian or Alaska Native	0.3%	0.4%	0.5%
	2017 Est. Other Races	12.6%	15.9%	19.0%
HISPANIC	2017 Est. Hispanic Population	13,183	66,665	190,623
	2017 Est. Hispanic Population	21.2%	28.9%	35.1%
	2022 Proj. Hispanic Population	23.7%	31.0%	37.0%
	2010 Hispanic Population	18.5%	27.2%	33.6%
EDUCATION (Adults 25 or Older)	2017 Est. Adult Population (25 Years or Over)	46,758	169,943	399,694
	2017 Est. Elementary (Grade Level 0 to 8)	12.5%	10.4%	10.3%
	2017 Est. Some High School (Grade Level 9 to 11)	5.1%	5.9%	6.8%
	2017 Est. High School Graduate	22.2%	19.5%	18.2%
	2017 Est. Some College	18.6%	19.0%	18.0%
	2017 Est. Associate Degree Only	7.7%	7.9%	7.1%
	2017 Est. Bachelor Degree Only	23.5%	25.1%	26.1%
	2017 Est. Graduate Degree	10.5%	12.2%	13.6%
HOUSING	2017 Est. Total Housing Units	25,340	88,781	215,525
	2017 Est. Owner-Occupied	19.8%	34.9%	37.1%
	2017 Est. Renter-Occupied	77.8%	62.5%	60.0%
	2017 Est. Vacant Housing	2.3%	2.6%	2.9%
HOMES BUILT BY YEAR	2010 Homes Built 2005 or later	0.3%	0.2%	0.2%
	2010 Homes Built 2000 to 2004	3.4%	3.2%	3.5%
	2010 Homes Built 1990 to 1999	8.7%	6.7%	6.0%
	2010 Homes Built 1980 to 1989	22.9%	14.9%	11.9%
	2010 Homes Built 1970 to 1979	17.4%	13.9%	12.6%
	2010 Homes Built 1960 to 1969	14.1%	14.4%	13.7%
	2010 Homes Built 1950 to 1959	12.5%	14.4%	15.1%
	2010 Homes Built Before 1949	30.5%	38.5%	41.7%
HOME VALUES	2010 Home Value \$1,000,000 or More	5.9%	7.4%	8.8%
	2010 Home Value \$500,000 to \$999,999	40.2%	47.3%	45.0%
	2010 Home Value \$400,000 to \$499,999	17.6%	17.7%	17.8%
	2010 Home Value \$300,000 to \$399,999	20.4%	15.6%	14.4%
	2010 Home Value \$200,000 to \$299,999	10.8%	6.3%	6.1%
	2010 Home Value \$150,000 to \$199,999	1.1%	1.0%	1.1%
	2010 Home Value \$100,000 to \$149,999	0.5%	0.5%	0.6%
	2010 Home Value \$50,000 to \$99,999	0.7%	0.7%	0.8%
	2010 Home Value \$25,000 to \$49,999	1.0%	0.7%	0.7%
	2010 Home Value Under \$25,000	1.1%	0.8%	0.7%
	2010 Median Home Value	\$499,342	\$568,602	\$594,579
	2010 Median Rent	\$1,205	\$1,214	\$1,206

This report was produced using data from private and government sources deemed to be reliable. The information herein is provided without representation or warranty.



# FULL PROFILE

2000-2010 Census, 2017 Estimates with 2022 Projections

Calculated using Weighted Block Centroid from Block Groups

Cypress Retail Group

Lat/Lon: 34.1500/-118.2457

RF1

## Glendale Ave & California Ave

### Glendale, CA

		1 Mile	3 Miles	5 Miles
LABOR FORCE	2017 Est. Labor Population Age 16 Years or Over	53,019	194,410	456,032
	2017 Est. Civilian Employed	56.1%	59.5%	62.0%
	2017 Est. Civilian Unemployed	3.0%	2.8%	2.9%
	2017 Est. in Armed Forces	0.1%	-	-
	2017 Est. not in Labor Force	40.8%	37.7%	35.1%
	2017 Labor Force Males	46.4%	47.4%	48.3%
	2017 Labor Force Females	53.6%	52.6%	51.7%
OCCUPATION	2010 Occupation: Population Age 16 Years or Over	29,753	115,593	282,666
	2010 Mgmt, Business, & Financial Operations	12.8%	14.9%	15.9%
	2010 Professional, Related	24.1%	26.4%	28.6%
	2010 Service	20.6%	18.4%	17.7%
	2010 Sales, Office	26.7%	24.9%	23.0%
	2010 Farming, Fishing, Forestry	0.1%	0.2%	0.2%
	2010 Construction, Extraction, Maintenance	5.6%	5.6%	5.7%
	2010 Production, Transport, Material Moving	10.1%	9.5%	9.0%
	2010 White Collar Workers	63.5%	66.3%	67.5%
	2010 Blue Collar Workers	36.5%	33.7%	32.5%
TRANSPORTATION TO WORK	2010 Drive to Work Alone	72.5%	74.2%	72.5%
	2010 Drive to Work in Carpool	9.0%	8.5%	8.2%
	2010 Travel to Work by Public Transportation	5.4%	5.3%	6.6%
	2010 Drive to Work on Motorcycle	0.2%	0.3%	0.3%
	2010 Walk or Bicycle to Work	5.7%	4.6%	4.3%
	2010 Other Means	0.7%	0.9%	1.0%
	2010 Work at Home	6.5%	6.3%	7.0%
TRAVEL TIME	2010 Travel to Work in 14 Minutes or Less	25.7%	22.4%	20.0%
	2010 Travel to Work in 15 to 29 Minutes	32.5%	34.3%	35.1%
	2010 Travel to Work in 30 to 59 Minutes	30.1%	34.2%	37.0%
	2010 Travel to Work in 60 Minutes or More	9.2%	11.4%	12.6%
	2010 Average Travel Time to Work	22.7	24.9	26.3
CONSUMER EXPENDITURE	2017 Est. Total Household Expenditure	\$1.24 B	\$5.22 B	\$13.6 B
	2017 Est. Apparel	\$43.5 M	\$183 M	\$480 M
	2017 Est. Contributions, Gifts	\$82.1 M	\$373 M	\$1.01 B
	2017 Est. Education, Reading	\$48.1 M	\$217 M	\$583 M
	2017 Est. Entertainment	\$69.0 M	\$293 M	\$767 M
	2017 Est. Food, Beverages, Tobacco	\$192 M	\$789 M	\$2.04 B
	2017 Est. Furnishings, Equipment	\$41.9 M	\$180 M	\$475 M
	2017 Est. Health Care, Insurance	\$110 M	\$450 M	\$1.16 B
	2017 Est. Household Operations, Shelter, Utilities	\$386 M	\$1.62 B	\$4.22 B
	2017 Est. Miscellaneous Expenses	\$18.5 M	\$76.1 M	\$197 M
	2017 Est. Personal Care	\$16.2 M	\$67.6 M	\$176 M
	2017 Est. Transportation	\$234 M	\$970 M	\$2.51 B

This report was produced using data from private and government sources deemed to be reliable. The information herein is provided without representation or warranty.