

# The Summit at Calabasas

Calabasas, CA

**One Retail and Two Restaurant Spaces Remaining!**

3,141 SF (Divisible) Retail/Service

3,738 SF Restaurant with  $\pm 1,000$  SF Patio

$\pm 1,232$ – $3,434$  SF Freestanding Multi-tenant Restaurant Opportunity  
with  $\pm 500$  SF Patio with Fire Pit

## FOR LEASE



**EREWHON**  
IF IT'S HERE IT'S GOOD FOR YOU



**Bob Haas**

805.449.1804 ext. 103  
rhaas@cypress.net  
License No. 00870324

**Matt Haas**

805.449.1804 ext. 106  
mhaas@cypress.net  
License No. 01970296

**Ilona Uribe**

805.449.1804 ext. 101  
ilona@cypress.net  
License No. 01919161





# The Summit at Calabasas

Calabasas, CA



## Property Highlights

- Approximately 1,232 – 3,434 SF freestanding multi-tenant restaurant opportunity with approximately +/- 500 SF patio with fire pit, 3,738 SF of Restaurant Space with +/- 1,000 SF Patio, and 3,141 SF of retail space
- Approximately 173,000 CPD (CoStar) on the 101 Freeway at Lost Hills Road
- Average Household Income (Trade Area Polygon): \$171,131
- Highly visible and easily accessed from the 101 Freeway at Lost Hills Road and Las Virgenes Road

## Co-Tenants

**EREWHON**  
Organic Grocer & Cafe

**UniverSal**  
appliance and kitchen center

**HOME**  
consignment  
CENTER



EXECUTIVE **ER**



**SPNPILATES**

**CalabasasSmiles**  
DENTISTRY

**SALON NUOVO** **Fitwall**

**CHIPOTLE**  
MEXICAN GRILL

**SUNPOWER®**  
by Green Convergence

Coming Soon

**BL/NKBAR** **MY DAY SPA**



**Bob Haas**

805.449.1804 ext. 103  
rhaas@cypress.net  
License No. 00870324

**Matt Haas**

805.449.1804 ext. 106  
mhaas@cypress.net  
License No. 01970296

**Ilona Uribe**

805.449.1804 ext. 101  
ilona@cypress.net  
License No. 01919161





# The Summit at Calabasas

Calabasas, CA

Close-Up Aerial



**Bob Haas**

805.449.1804 ext. 103  
rhaas@cypress.net  
License No. 00870324

**Matt Haas**

805.449.1804 ext. 106  
mhaas@cypress.net  
License No. 01970296

**Ilona Uribe**

805.449.1804 ext. 101  
ilona@cypress.net  
License No. 01919161





# The Summit at Calabasas

Calabasas, CA

## Site Plan



**Bob Haas**  
805.449.1804 ext. 103  
rhaas@cypress.net  
License No. 00870324

**Matt Haas**  
805.449.1804 ext. 106  
mhaas@cypress.net  
License No. 01970296

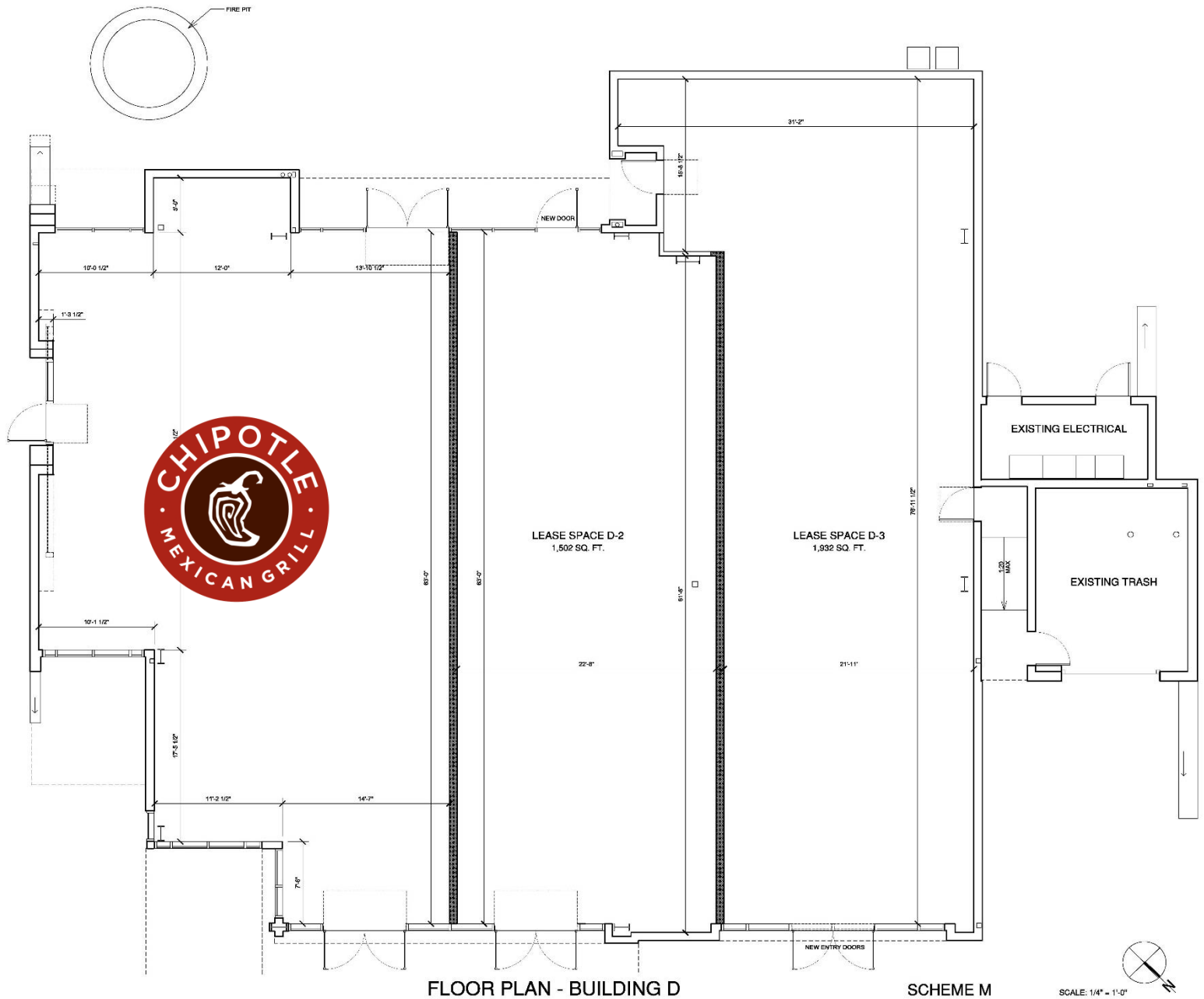
**Ilona Uribe**  
805.449.1804 ext. 101  
ilona@cypress.net  
License No. 01919161



# The Summit at Calabasas

Calabasas, CA

## Floor Plan



**Bob Haas**  
805.449.1804 ext. 103  
rhaas@cypress.net  
License No. 00870324

**Matt Haas**  
805.449.1804 ext. 106  
mhaas@cypress.net  
License No. 01970296

**Ilona Uribe**  
805.449.1804 ext. 101  
ilona@cypress.net  
License No. 01919161

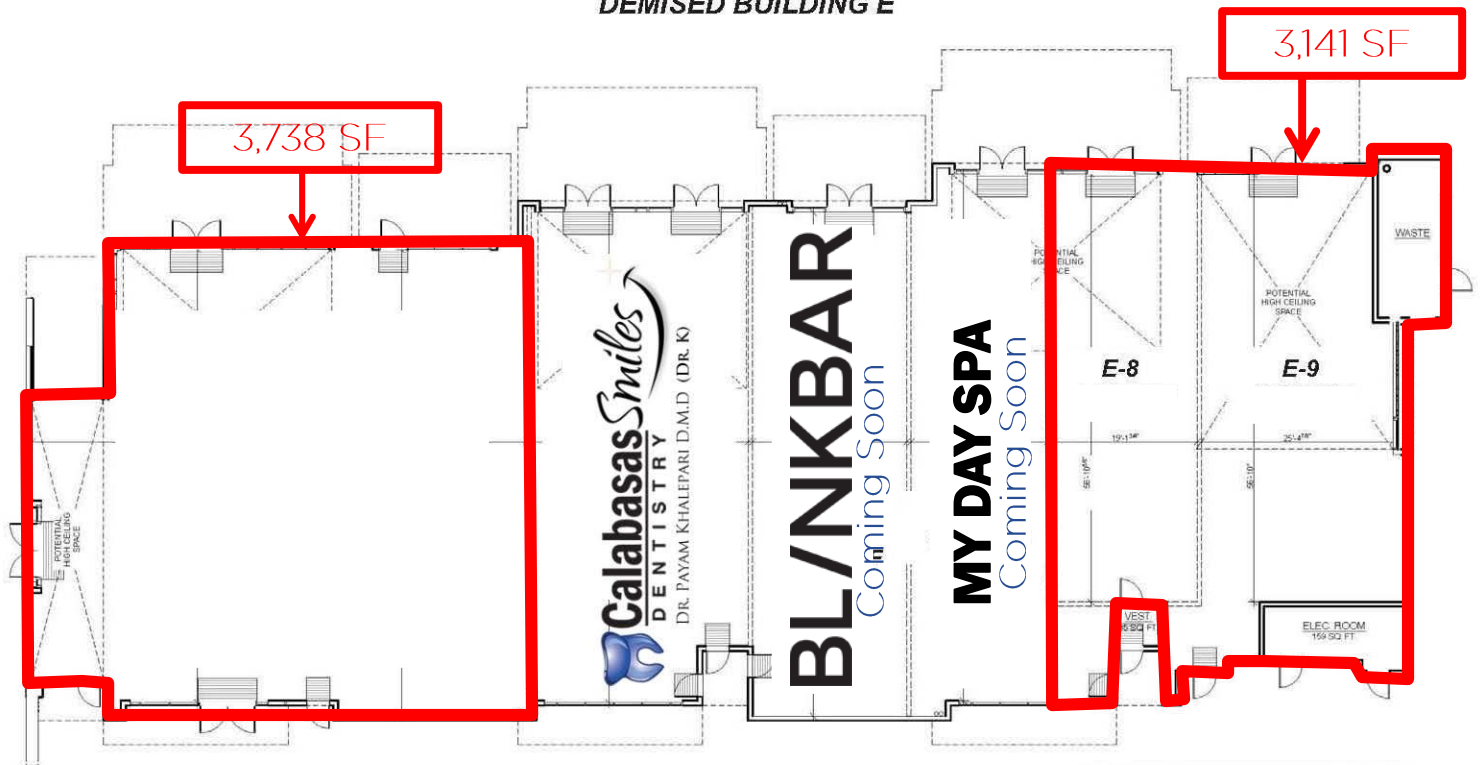


# The Summit at Calabasas

Calabasas, CA

## Demising Plan

### DEMISED BUILDING E



NOTE: THE GROSS SQUARE FOOTAGES SHOWN HERE ARE FOR REPRESENTATIONAL PURPOSES ONLY. THESE AREAS WILL VARY SLIGHTLY AS THE BUILDING GETS ENGINEERED, DETAILED AND CONSTRUCTED



**Bob Haas**  
805.449.1804 ext. 103  
rhaas@cypress.net  
License No. 00870324

**Matt Haas**  
805.449.1804 ext. 106  
mhaas@cypress.net  
License No. 01970296

**Ilona Uribe**  
805.449.1804 ext. 101  
ilona@cypress.net  
License No. 01919161





# The Summit at Calabasas

Calabasas, CA

## Photos



### Bob Haas

805.449.1804 ext. 103  
rhaas@cypress.net  
License No. 00870324

### Matt Haas

805.449.1804 ext. 106  
mhaas@cypress.net  
License No. 01970296

### Ilona Uribe

805.449.1804 ext. 101  
ilona@cypress.net  
License No. 01919161





# The Summit at Calabasas

Calabasas, CA



## Bob Haas

805.449.1804 ext. 103  
rhaas@cypress.net  
License No. 00870324

## Matt Haas

805.449.1804 ext. 106  
mhaas@cypress.net  
License No. 01970296

## Ilona Uribe

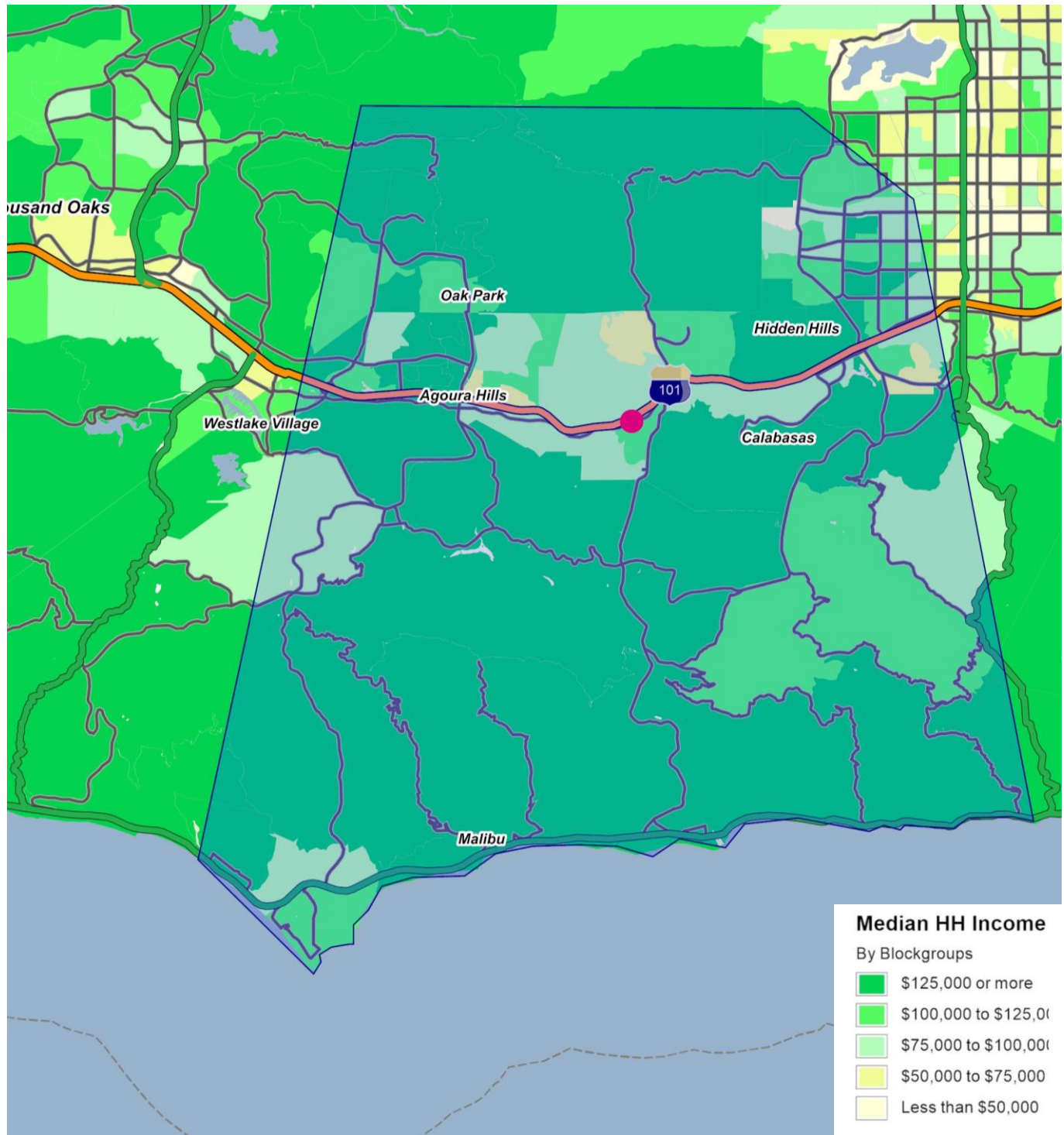
805.449.1804 ext. 101  
ilona@cypress.net  
License No. 01919161



# The Summit at Calabasas

Calabasas, CA

## Demographics



**Bob Haas**  
805.449.1804 ext. 103  
rhaas@cypress.net  
License No. 00870324

**Matt Haas**  
805.449.1804 ext. 106  
mhaas@cypress.net  
License No. 01970296

**Ilona Uribe**  
805.449.1804 ext. 101  
ilona@cypress.net  
License No. 01919161



# FULL PROFILE

2000-2010 Census, 2017 Estimates with 2022 Projections

Calculated using Weighted Block Centroid from Block Groups

Cypress Retail Group

Lat/Lon: 34.1162/-118.7157

RF1

The Summit

Calabasas, CA

Object 1

POPULATION	2017 Estimated Population	138,740
	2022 Projected Population	142,510
	2010 Census Population	134,958
	2000 Census Population	131,745
	Projected Annual Growth 2017 to 2022	0.5%
	Historical Annual Growth 2000 to 2017	0.3%
HOUSEHOLDS	2017 Estimated Households	50,675
	2022 Projected Households	52,782
	2010 Census Households	48,867
	2000 Census Households	46,820
	Projected Annual Growth 2017 to 2022	0.8%
	Historical Annual Growth 2000 to 2017	0.5%
AGE	2017 Est. Population Under 10 Years	10.4%
	2017 Est. Population 10 to 19 Years	13.4%
	2017 Est. Population 20 to 29 Years	10.0%
	2017 Est. Population 30 to 44 Years	17.2%
	2017 Est. Population 45 to 59 Years	24.8%
	2017 Est. Population 60 to 74 Years	17.3%
	2017 Est. Population 75 Years or Over	7.0%
	2017 Est. Median Age	43.2
MARITAL STATUS & GENDER	2017 Est. Male Population	48.7%
	2017 Est. Female Population	51.3%
	2017 Est. Never Married	29.4%
	2017 Est. Now Married	51.9%
	2017 Est. Separated or Divorced	14.0%
	2017 Est. Widowed	4.7%
INCOME	2017 Est. HH Income \$200,000 or More	27.2%
	2017 Est. HH Income \$150,000 to \$199,999	11.6%
	2017 Est. HH Income \$100,000 to \$149,999	19.4%
	2017 Est. HH Income \$75,000 to \$99,999	10.0%
	2017 Est. HH Income \$50,000 to \$74,999	11.2%
	2017 Est. HH Income \$35,000 to \$49,999	7.0%
	2017 Est. HH Income \$25,000 to \$34,999	4.9%
	2017 Est. HH Income \$15,000 to \$24,999	3.6%
	2017 Est. HH Income Under \$15,000	4.9%
	2017 Est. Average Household Income	\$166,903
	2017 Est. Median Household Income	\$124,152
	2017 Est. Per Capita Income	\$61,121
	2017 Est. Total Businesses	8,381
	2017 Est. Total Employees	78,468

This report was produced using data from private and government sources deemed to be reliable. The information herein is provided without representation or warranty.



# FULL PROFILE

2000-2010 Census, 2017 Estimates with 2022 Projections

Calculated using Weighted Block Centroid from Block Groups

Cypress Retail Group

Lat/Lon: 34.1162/-118.7157

RF1

## The Summit

## Calabasas, CA

Object 1

RACE	2017 Est. White	80.0%
	2017 Est. Black	2.7%
	2017 Est. Asian or Pacific Islander	10.0%
	2017 Est. American Indian or Alaska Native	0.3%
	2017 Est. Other Races	7.1%
HISPANIC	2017 Est. Hispanic Population	17,083
	2017 Est. Hispanic Population	12.3%
	2022 Proj. Hispanic Population	15.4%
	2010 Hispanic Population	8.5%
EDUCATION (Adults 25 or Older)	2017 Est. Adult Population (25 Years or Over)	98,237
	2017 Est. Elementary (Grade Level 0 to 8)	2.1%
	2017 Est. Some High School (Grade Level 9 to 11)	2.2%
	2017 Est. High School Graduate	14.6%
	2017 Est. Some College	18.9%
	2017 Est. Associate Degree Only	8.0%
	2017 Est. Bachelor Degree Only	30.8%
	2017 Est. Graduate Degree	23.5%
HOUSING	2017 Est. Total Housing Units	52,777
	2017 Est. Owner-Occupied	75.9%
	2017 Est. Renter-Occupied	20.1%
	2017 Est. Vacant Housing	4.0%
HOMES BUILT BY YEAR	2010 Homes Built 2005 or later	0.2%
	2010 Homes Built 2000 to 2004	5.6%
	2010 Homes Built 1990 to 1999	12.8%
	2010 Homes Built 1980 to 1989	24.3%
	2010 Homes Built 1970 to 1979	21.6%
	2010 Homes Built 1960 to 1969	18.9%
	2010 Homes Built 1950 to 1959	13.9%
	2010 Homes Built Before 1949	5.6%
HOME VALUES	2010 Home Value \$1,000,000 or More	9.8%
	2010 Home Value \$500,000 to \$999,999	47.4%
	2010 Home Value \$400,000 to \$499,999	15.9%
	2010 Home Value \$300,000 to \$399,999	11.1%
	2010 Home Value \$200,000 to \$299,999	4.2%
	2010 Home Value \$150,000 to \$199,999	0.9%
	2010 Home Value \$100,000 to \$149,999	0.6%
	2010 Home Value \$50,000 to \$99,999	1.0%
	2010 Home Value \$25,000 to \$49,999	0.6%
	2010 Home Value Under \$25,000	0.7%
	2010 Median Home Value	\$673,101
	2010 Median Rent	\$1,868

This report was produced using data from private and government sources deemed to be reliable. The information herein is provided without representation or warranty.



# FULL PROFILE

2000-2010 Census, 2017 Estimates with 2022 Projections

Calculated using Weighted Block Centroid from Block Groups

Cypress Retail Group

Lat/Lon: 34.1162/-118.7157

RF1

## The Summit

### Calabasas, CA

Object 1

LABOR FORCE	2017 Est. Labor Population Age 16 Years or Over	113,473
	2017 Est. Civilian Employed	60.1%
	2017 Est. Civilian Unemployed	2.2%
	2017 Est. in Armed Forces	-
	2017 Est. not in Labor Force	37.6%
	2017 Labor Force Males	48.0%
	2017 Labor Force Females	52.0%
OCCUPATION	2010 Occupation: Population Age 16 Years or Over	68,222
	2010 Mgmt, Business, & Financial Operations	24.6%
	2010 Professional, Related	31.5%
	2010 Service	11.8%
	2010 Sales, Office	24.1%
	2010 Farming, Fishing, Forestry	0.1%
	2010 Construction, Extraction, Maintenance	3.5%
	2010 Production, Transport, Material Moving	4.4%
	2010 White Collar Workers	80.2%
	2010 Blue Collar Workers	19.8%
TRANSPORTATION TO WORK	2010 Drive to Work Alone	76.9%
	2010 Drive to Work in Carpool	6.1%
	2010 Travel to Work by Public Transportation	2.2%
	2010 Drive to Work on Motorcycle	0.2%
	2010 Walk or Bicycle to Work	2.7%
	2010 Other Means	1.0%
	2010 Work at Home	10.8%
TRAVEL TIME	2010 Travel to Work in 14 Minutes or Less	23.8%
	2010 Travel to Work in 15 to 29 Minutes	27.5%
	2010 Travel to Work in 30 to 59 Minutes	31.1%
	2010 Travel to Work in 60 Minutes or More	17.8%
	2010 Average Travel Time to Work	27.4
CONSUMER EXPENDITURE	2017 Est. Total Household Expenditure	\$5.22 B
	2017 Est. Apparel	\$186 M
	2017 Est. Contributions, Gifts	\$445 M
	2017 Est. Education, Reading	\$252 M
	2017 Est. Entertainment	\$299 M
	2017 Est. Food, Beverages, Tobacco	\$745 M
	2017 Est. Furnishings, Equipment	\$190 M
	2017 Est. Health Care, Insurance	\$423 M
	2017 Est. Household Operations, Shelter, Utilities	\$1.61 B
	2017 Est. Miscellaneous Expenses	\$72.1 M
	2017 Est. Personal Care	\$66.5 M
	2017 Est. Transportation	\$926 M

This report was produced using data from private and government sources deemed to be reliable. The information herein is provided without representation or warranty.