



THE

# Summit

AT CALABASAS

FOR LEASE

1,394 SF Retail/Service





## Property Highlights

- 1,394 SF retail/service space available
- Final remaining opportunities in Erewhon-anchored shopping center
- Approximately 173,000 CPD on the 101 Freeway at Lost Hills Road
- Average Household Income (Trade Area Polygon): \$206,442
- Highly visible and easily accessed from the 101 Freeway at Lost Hills Road and Las Virgenes Road



Co-Tenants



SUSHI NISHI

SALON PUUVO



MATHNASIUM  
The Math Learning Center

**EREWHON**  
ORGANIC GROCER & CAFE



universal Spot Dry Cleaners



Coming Soon:



CIENEGA MED SPA  
Rose's Garden

CosmoProf

CalabasasSmiles  
DENTISTRY  
DR. PAYAM KHALEPARI D.M.D. (DR. K)

fringe IQ



Yoga Studio



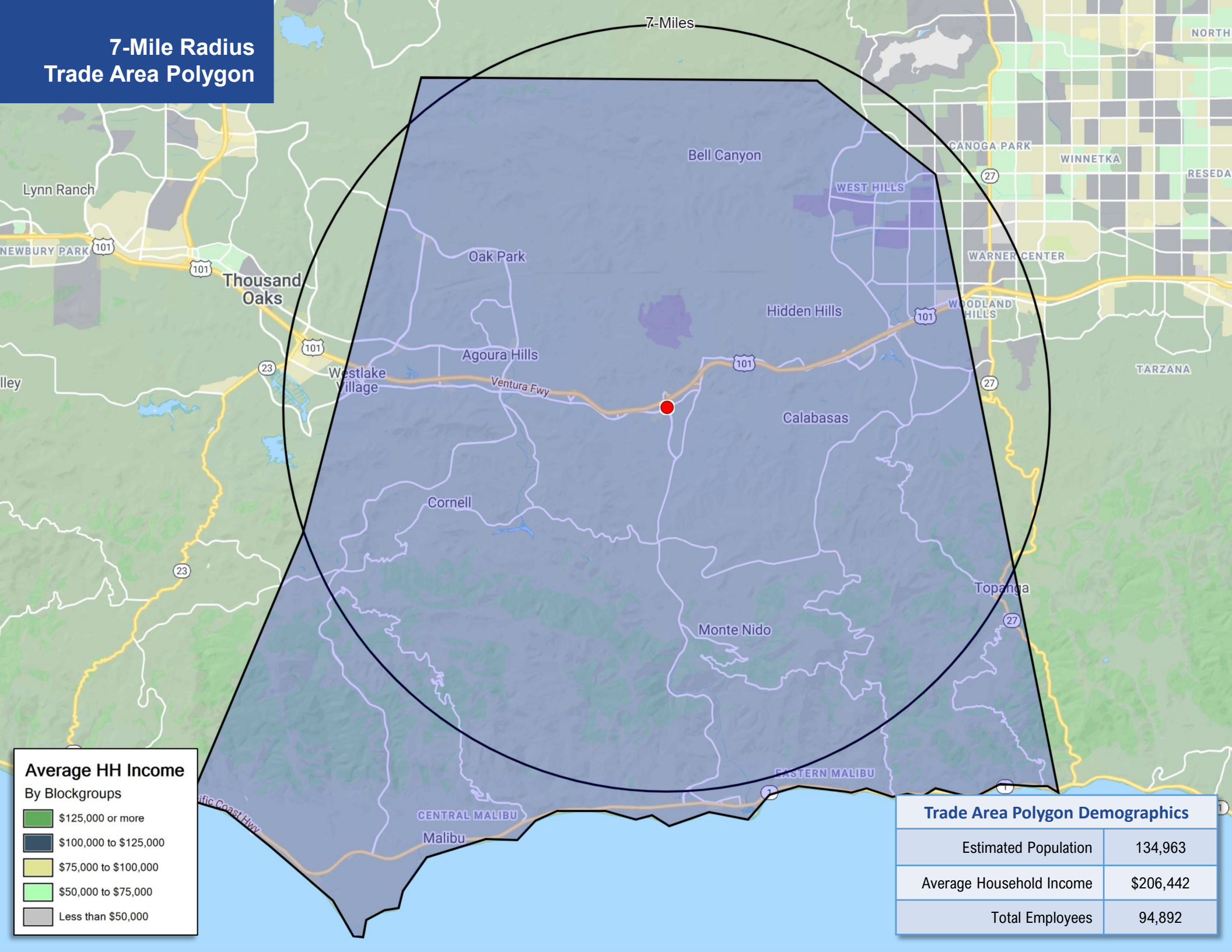
CYPRESS RETAIL GROUP

**Matt Haas**  
805.449.1804 ext. 106  
mhaas@cypress.net  
License No. 01970296

**Bob Haas**  
805.449.1804 ext. 103  
rhaas@cypress.net  
License No. 00870324

**Ilona Uribe**  
805.449.1804 ext. 101  
ilona@cypress.net  
License No. 01919161

# 7-Mile Radius Trade Area Polygon



## Average HH Income By Blockgroups

- \$125,000 or more
- \$100,000 to \$125,000
- \$75,000 to \$100,000
- \$50,000 to \$75,000
- Less than \$50,000

Trade Area Polygon Demographics	
Estimated Population	134,963
Average Household Income	\$206,442
Total Employees	94,892

Aerial

**SITE**

**EREWHON**  
ORGANIC GROCER & CAFE

**universal**  
appliance and kitchen center

**fringe IQ**

**VITALITY PERSONAL TRAINING**

**Spot Dry Cleaners**

**Calabasas Smiles**

**Jersey Mikes**  
SUBS

**Yoga Studio**

**CosmoProf**

**MATHNASIUM**

**BCBC NAIL SPA**

**SALON PUUVO**

**Coming Soon:**

**Spitz & Coffee**

**SUGARING NYC**

**SCIENEGA MED SPA**

**Rose's Garden**

**Albertsons** **McDonald's** **SHARKY'S**

**STARBUCKS**

**TACO BELL**

**7 ELEVEN**

**Good Nite Inn**

**UCLA Medical**  
50,000 SF

**HARBOR FREIGHT TOOLS**  
Corporate Office  
Coming Soon

**Domino's**  
**SUBWAY**  
**Jack**  
In the box

**intel**

**US 101**  
173,000 CPD

**AGOURA RD**

**LOST HILLS RD**

**LAS VIRGENES RD**  
29,132 CPD

**LA Sheriffs Department**

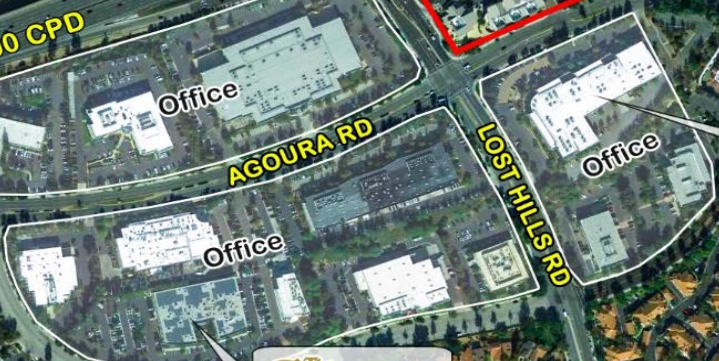
**Agoura Hills/ Calabasas Community Center**

**The Cheesecake Factory**

**Las Virgenes Unified School District**

**A.E. Wright Middle School**

**PEPPERDINE**



Site  
Aerial

OFFICE  
USES

LOST HILLS RD

173,000 CPD



EREWHON

AGOURA RD

PEPPERDINE  
University  
Calabasas Campus

**HARBOR  
FREIGHT**

Quality Tools at Ridiculously Low Prices

Corporate Offices  
Coming Soon

# Site Plan



101 FREEWAY

**EREWTHON**  
IF IT'S HERE IT'S GOOD FOR YOU  
**ORGANIC GROCER & CAFE**

**HOME**  
Consignment Center

**Universal**  
Appliance and Kitchen Center

**Exer**  
More than just a gym

**CosmoProf**

**MATHNASIUM**  
The Math Learning Center

**SUGARING NYC**  
ORGANIC WAXING & LASH STUDIO  
Coming Soon

**Philz Coffee**  
Coming Soon

**AVAILABLE**  
**1,394 SF**

**fringe**

**Yoga Studio**

**BCBC NAIL SPA**

**Jersey Mike's Subs**

**Spot Dry Cleaners**

**VITALITY PERSONAL TRAINING**

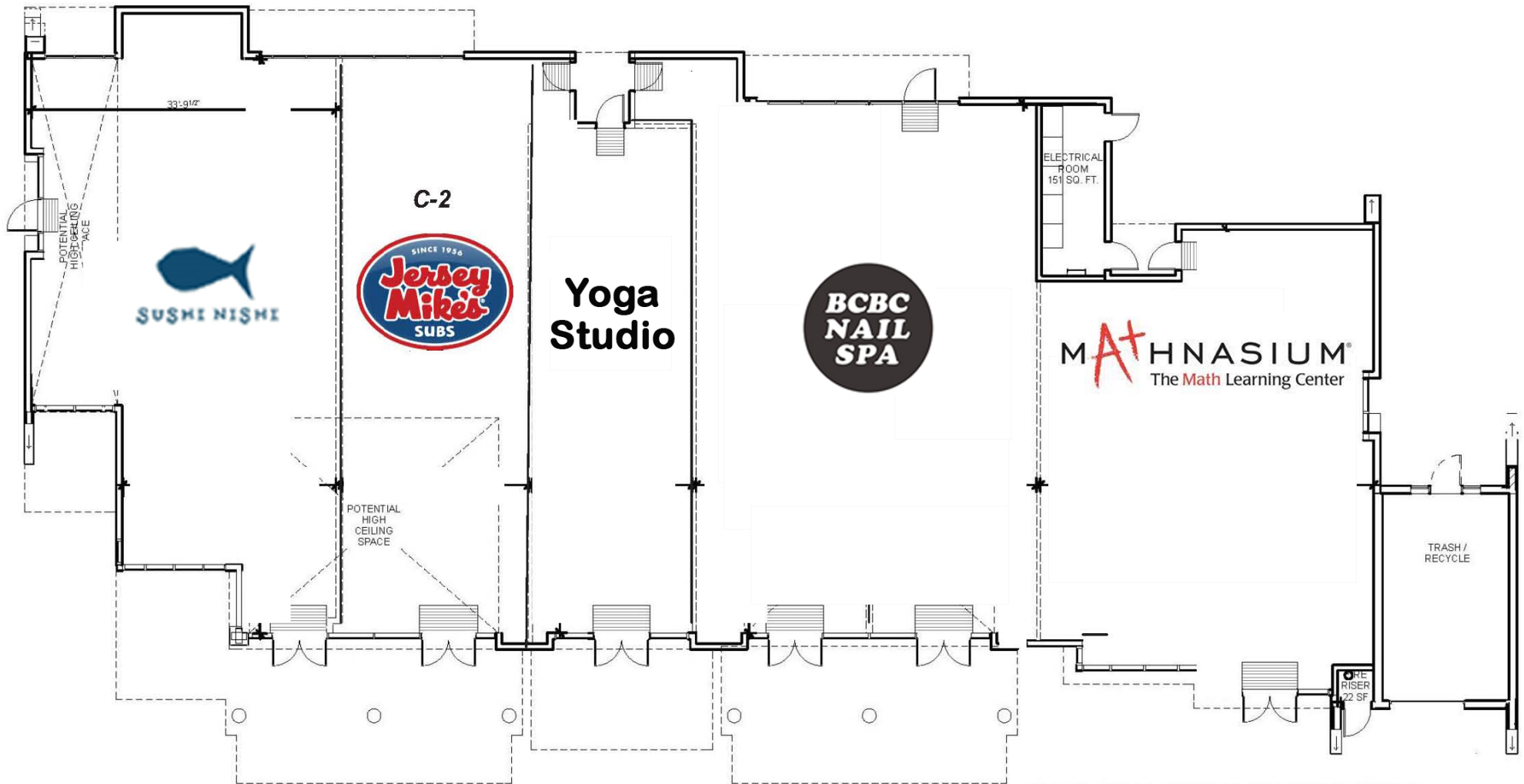
**Furr Saj RESTAURANT**

**Calababas Smiles DENTISTRY**

**Coming Soon**  
**CIENEGA MED SPA**  
Rose's Garden

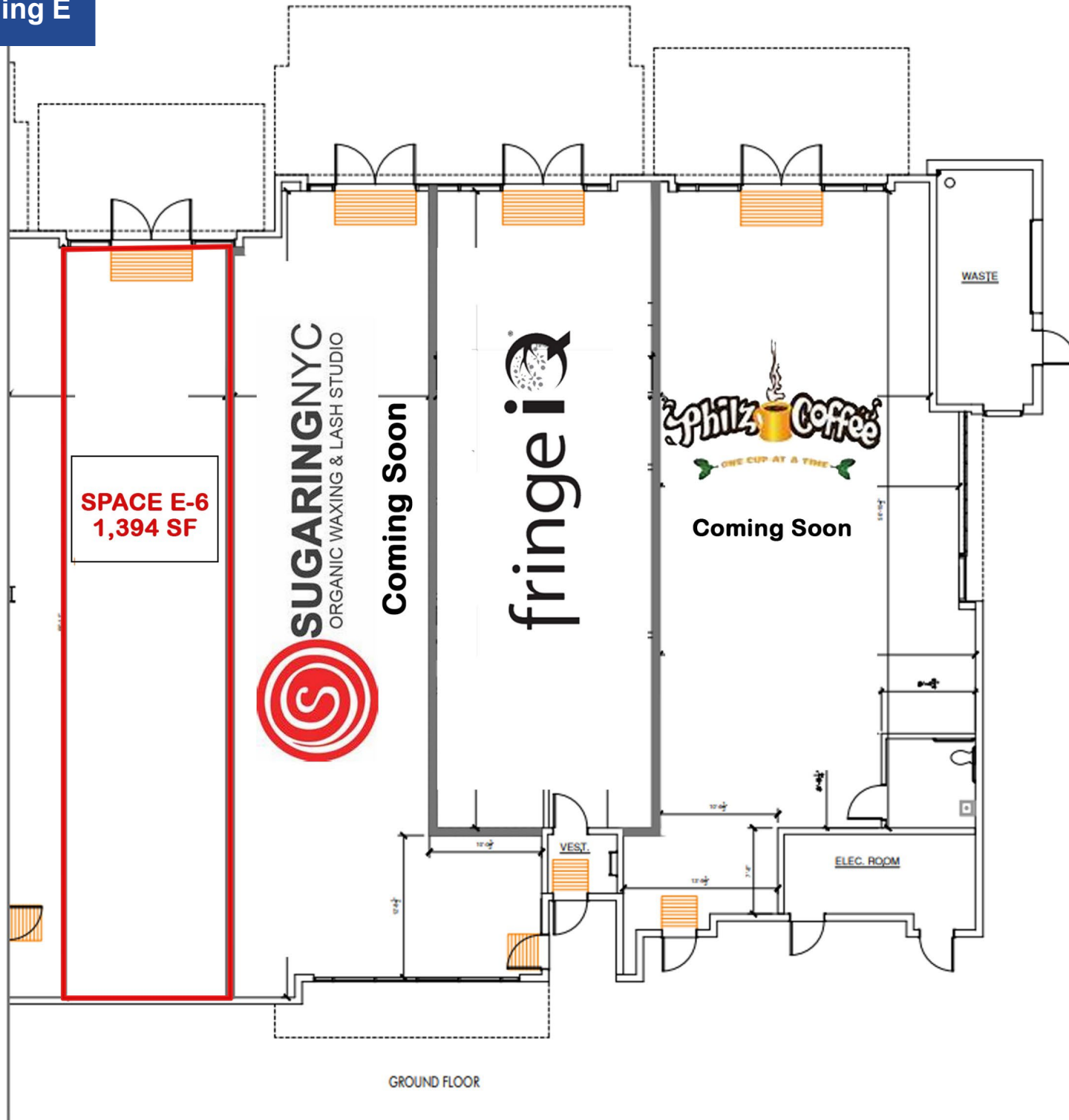


# Floor Plan Building C



NOTE: THE GROSS SQUARE FOOTAGES SHOWN HERE ARE FOR REPRESENTATIONAL PURPOSES ONLY. THESE AREAS WILL VARY SLIGHTLY AS THE BUILDING GETS ENGINEERED, DETAILED AND CONSTRUCTED

Partial Floor Plan  
Building E







## Contact Us

### Matt Haas

805.449.1804 ext. 106  
mhaas@cypress.net  
License No. 01970296

### Bob Haas

805.449.1804 ext. 103  
rhaas@cypress.net  
License No. 00870324

### Ilona Uribe

805.449.1804 ext. 101  
ilona@cypress.net  
License No. 01919161



[www.cypress.net](http://www.cypress.net)

**North Office**  
3625 E Thousand Oaks Blvd, Suite 108  
Westlake Village, CA 91362

The information provided herein is intended as a general depiction of the property and is subject to change. This information has been obtained by sources deemed reliable. The information has not been independently verified and Cypress Retail Group and its agents do not warrant or represent that the information provided is accurate. Individuals are solely responsible for verifying information related to the property and its suitability for the individual's use.