

Glendale Plaza

Glendale, CA

FOR LEASE | 2,340 SF Second Floor Space Available | NEC Glendale Ave & California Ave





Property Highlights

- 2,340 SF second-floor retail/office unit for lease
- Located across the street from the Glendale Fashion Center and Whole Foods
- Over 45,000 CPD at the intersection of Glendale Ave & California Ave



Co-Tenants

 **THE COFFEE BEAN & TEA LEAF™**
 **Banfield™ PET HOSPITAL**
 **AMERICA'S BEST CONTACTS & EYEGLASSES**
 **SalonCentric**
 **Crystal Cleaners**
 **Western Dental & Orthodontics**
Coming Soon: SUPERCUTS™

Area Retailers

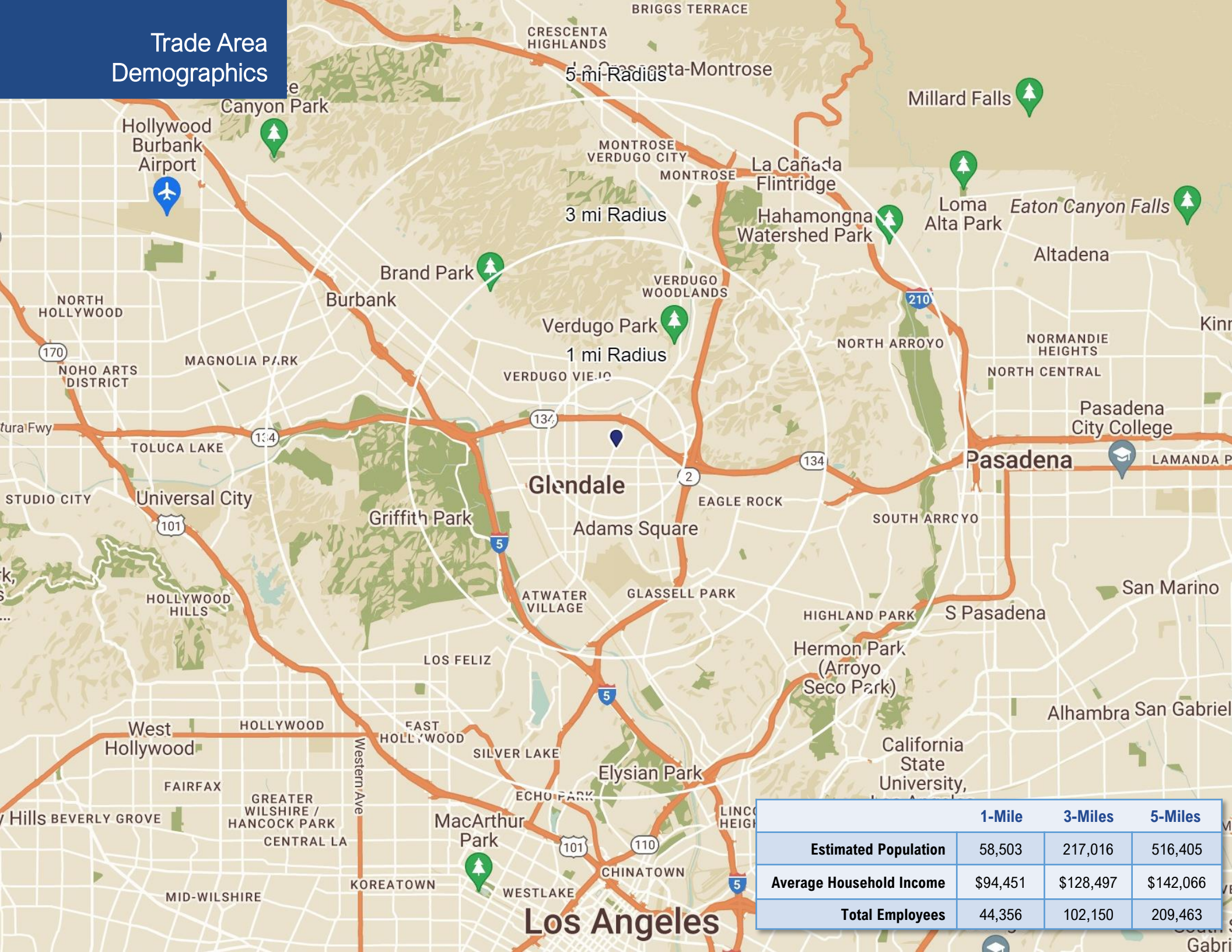
 **WHOLE FOODS MARKET**
 **NORDSTROM rack**
 **T.J. maxx™**
 **Michaels**
 **WORLD MARKET. COST PLUS**
 **Ralphs**
 **petco**
 **ROSS DRESS FOR LESS™**
 **Total Wine & MORE**



Matt Haas
 805.449.1804 ext. 106
 mhaas@cypress.net
 License No. 01970296

Bob Haas
 805.449.1804 ext. 103
 rhaas@cypress.net
 License No. 00870324

Trade Area Demographics



	1-Mile	3-Miles	5-Miles
Estimated Population	58,503	217,016	516,405
Average Household Income	\$94,451	\$128,497	\$142,066
Total Employees	44,356	102,150	209,463



VONS **RITE AID**

theVitamin Shoppe

SITE - Glendale Plaza
AMERICA'S BEST CONTACTS & EYEGLASSES
Banfield PET HOSPITAL
 SalonCentric
 Western Dental & Orthodontics
 COFFEE BEAN TEA LEAF
 Coming Soon: **SUPERCUTS**

LEXINGTON DR
 Glendale Fashion Center
 NORDSTROM
 rack **tj-maxx**
 ROSS DRESS FOR LESS
 Michaels **PETCO**
 WORLD MARKET

WHOLE FOODS MARKET

CALIFORNIA AVE 9,992 CPD

Glendale Galleria
 ★ macy's **JCPenney**
 TARGET **DICK'S** SPORTING GOODS **PIRCH**

BRAND BLVD

WILSON AVE

GLENDALE AVE 43,982 CPD

DOLLAR TREE **CHIPOTLE**

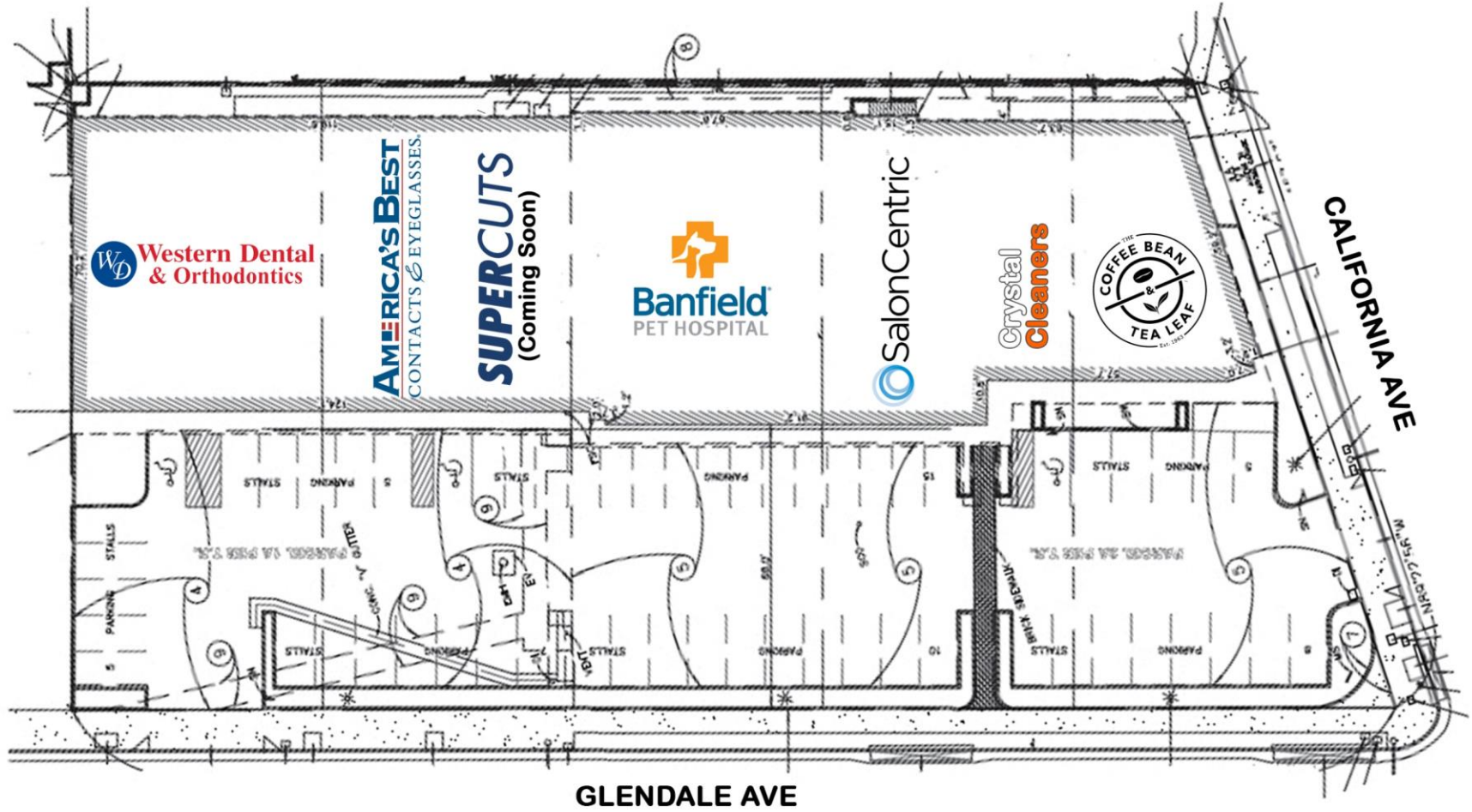
BROADWAY

CVS

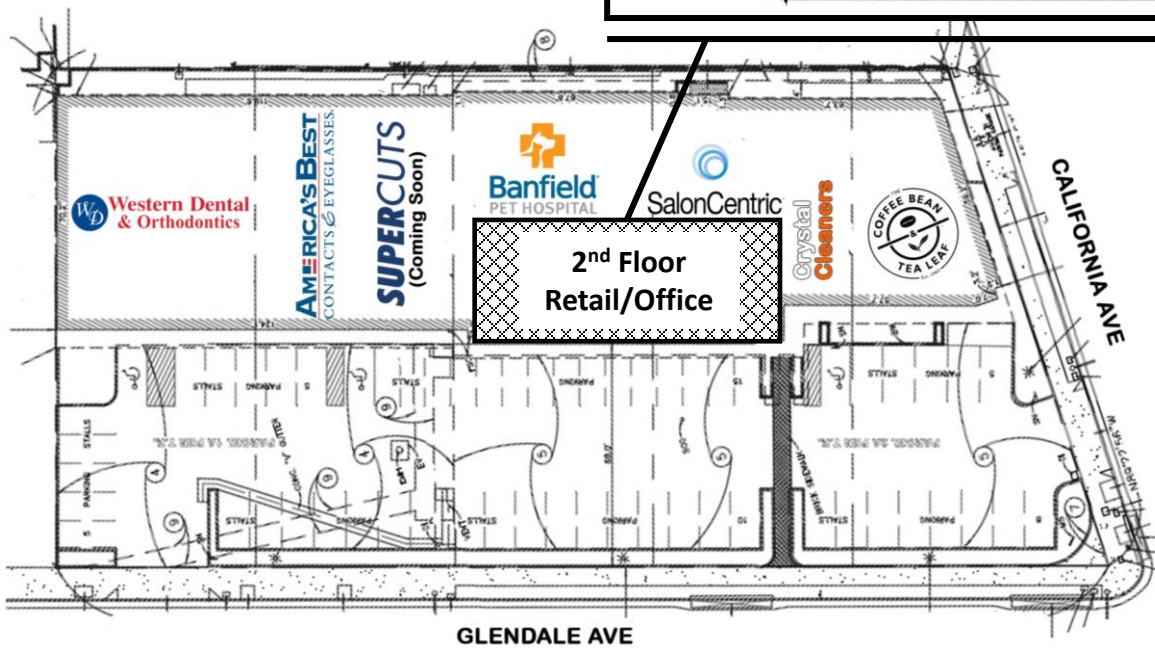
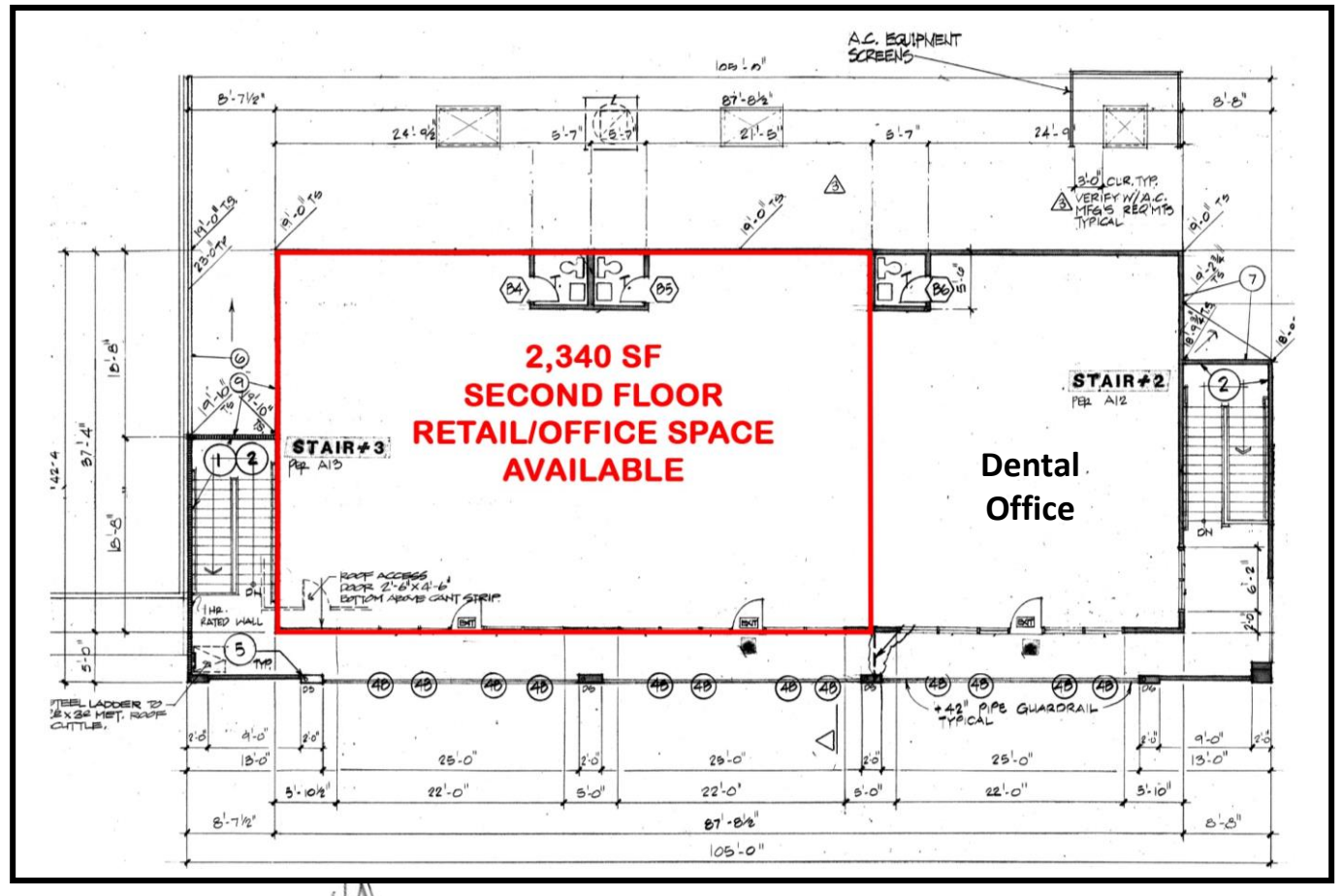
COLORADO ST

The Americana at Brand
 bloomingdale's **The Cheesecake Factory**
 NORDSTROM PACIFIC THEATRES

Site Plan
Ground Floor



Site Plan
Second Floor





Contact Us

Matt Haas

805.449.1804 ext. 106
 mhaas@cypress.net
 License No. 01970296

Bob Haas

805.449.1804 ext. 103
 rhaas@cypress.net
 License No. 00870324



www.cypress.net

North Office
 4035 E Thousand Oaks Blvd, Suite 230
 Westlake Village, CA 91362

The information provided herein is intended as a general depiction of the property and is subject to change. This information has been obtained by sources deemed reliable. The information has not been independently verified and Cypress Retail Group and its agents do not warrant or represent that the information provided is accurate. Individuals are solely responsible for verifying information related to the property and its suitability for the individual's use.