



Donlon Plaza

Ventura

FOR LEASE

750 SF - 7,383 SF Available



Property Highlights

- 4,383 SF endcap unit available (potential for up to 7,383 SF)
- 750 SF – 3,000 SF in-line space available
- Immediately adjacent to Target and McDonald's
- Centrally located within the Ventura trade area
- Within close proximity to the 101 Freeway and the Pacific View Regional Mall
- At Lease stage with National Retailer for ±27,718 SF Anchor position

	1-Mile	3-Miles	5-Miles
Estimated Population	10,276	64,584	166,961
Average Household Income	\$130,964	\$138,047	\$128,143
Total Employees	15,823	40,234	67,044



Co-Tenants



Area Retailers



Bob Haas
805.449.1804 ext. 103
rhaas@cypress.net
License No. 00870324

Matt Haas
805.449.1804 ext. 106
mhaas@cypress.net
License No. 01970296

Ilona Uribe
805.449.1804 ext. 101
ilona@cypress.net
License No. 01919161

Aerial

LASSENS
NATURAL FOODS & ATTAINING

US
101

130,635 CPD

E MAIN ST 43,010 CPD

BIG
5
SPORTING GOODS

McDonald's

SITE

DONLON ST

Ortho
MATTRESS

DEL TACO

petco

Lakeshore
LEARNING STORE

FedEx
of orange health

AMERICA'S BEST
COFFEE

34,403 CPD

Office
DEPOT
LAMPS
PLUS

ALDI

STARBUCKS
COFFEE

CHUCK E
CHEESE'S

Chick-fil-A

TREK

target

BESSEMER ST

BLACK ANGUS
STEAKHOUSE

Arby's

BLAZE
PIZZA

MATTRESS
FIRM
Join it again
SALLY
BEAUTY

ROSS

WaBa Grill
Poke U Me

the Habit
BURGER GRILL

DOLLAR
TREE

WinCo
FOODS

Burlington

Montecito
Bank & Trust

WESTINGHOUSE ST

STRETCH LAB
Coming Soon

FIREHOUSE
SUBS

MAIN ST

DONLON ST

750 SF

Eggs n Things
SportClips
HAIRCUTS

cricket

OneMain
Financial

1,640 SF

CLUB PILATES
Wild Birds Unlimited

AT LEASE STAGE
WITH NATIONAL
RETAILER
FOR ANCHOR
POSITION

3,000 SF

4,383 SF

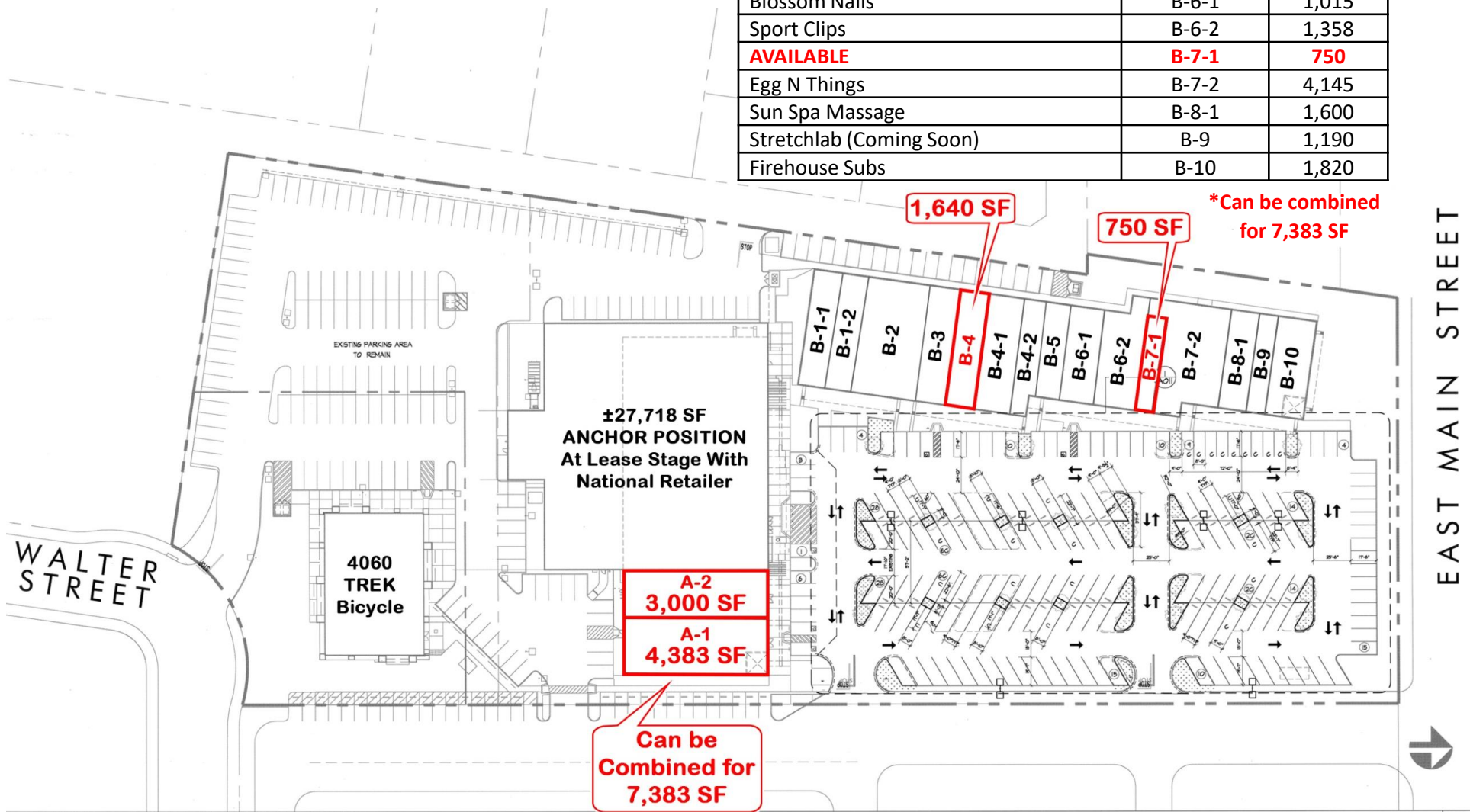
Can be
combined to
7,383 SF

TREK

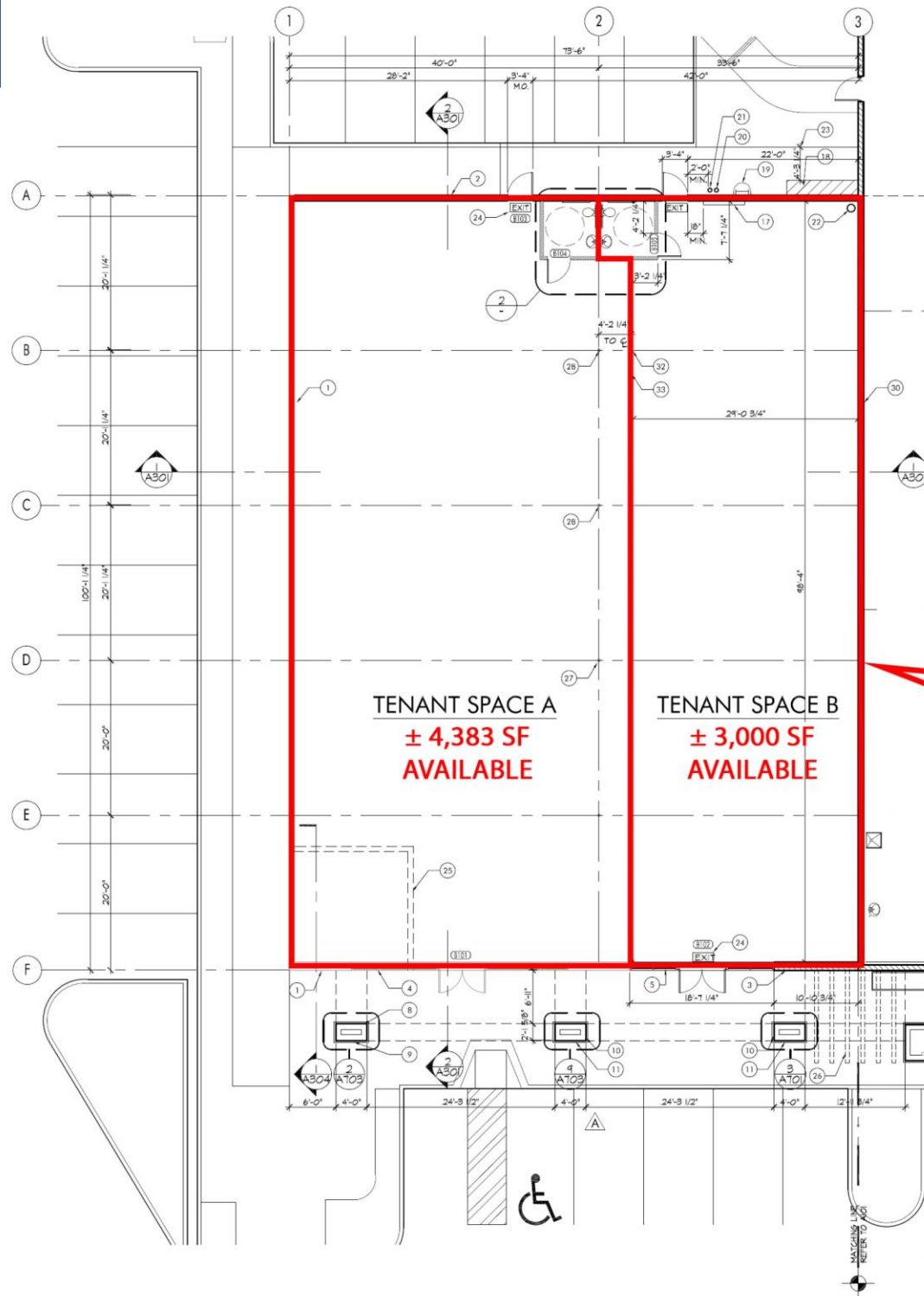


Site Plan

Tenant	Unit	SF
At Lease Stage with National Retailer	4040	27,718
AVAILABLE	A-2	3,000*
AVAILABLE	A-1	4,383*
Wild Birds Unlimited	B-1	1,640
Club Pilates	B-1-2	1,624
China Kitchen	B-2	3,280
One Main Financial	B-3	1,640
AVAILABLE	B-4	1,640
Cricket Wireless	B-4-1	1,886
Angela A 1 Threading	B-4-2	1,342
Royal Kings Smokes	B-5	1,496
Blossom Nails	B-6-1	1,015
Sport Clips	B-6-2	1,358
AVAILABLE	B-7-1	750
Egg N Things	B-7-2	4,145
Sun Spa Massage	B-8-1	1,600
Stretchlab (Coming Soon)	B-9	1,190
Firehouse Subs	B-10	1,820



4,383 SF & 3,000 SF Floor Plan



Existing Floor Plan





Contact Us

Bob Haas

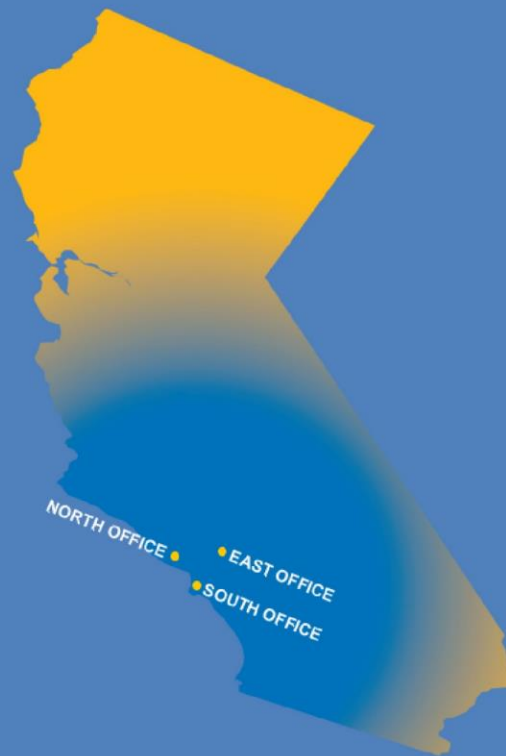
805.449.1804 ext. 103
rhaas@cypress.net
License No. 00870324

Matt Haas

805.449.1804 ext. 106
mhaas@cypress.net
License No. 01970296

Ilona Uribe

805.449.1804 ext. 101
ilona@cypress.net
License No. 01919161



www.cypress.net

North Office
4035 E Thousand Oaks Blvd, Suite 230
Westlake Village, CA 91362

The information provided herein is intended as a general depiction of the property and is subject to change. This information has been obtained by sources deemed reliable. The information has not been independently verified and Cypress Retail Group and its agents do not warrant or represent that the information provided is accurate. Individuals are solely responsible for verifying information related to the property and its suitability for the individual's use.