

# Glendale Plaza

Glendale, CA

FOR LEASE 3,500 SF Available | NEC Glendale Ave & California Ave



CA DRE License No. 00870324





## Property Highlights

- 3,500 SF Retail Space Available!
- Located across the street from the Glendale Fashion Center and Whole Foods
- Over 46,000 CPD at the intersection of Glendale Ave & California Ave



## Co-Tenants










Fix Medical Spa  
COMING SOON

## Area Retailers















**Matt Haas**  
 805.449.1804 ext. 106  
[mhaas@cypressretail.net](mailto:mhaas@cypressretail.net)  
 License No. 01970296

**Bob Haas**  
 805.449.1804 ext. 103  
[rhaas@cypressretail.net](mailto:rhaas@cypressretail.net)  
 License No. 00870324

# Trade Area Demographics



	1-Mile	3-Miles	5-Miles
<b>Estimated Population</b>	60,473	210,904	498,819
<b>Average Household Income</b>	\$103,431	\$132,768	\$145,594
<b>Total Employees</b>	46,171	102,435	210,063



**VONS** **RITE AID**

COMING SOON:  
**EREWHON**

theVitamin Shoppe

LEXINGTON DR

Glendale Fashion Center  
NORDSTROM  
rack TJ-maxx  
ROSS DRESS FOR LESS  
Ralphs  
Michael's PETCO  
WORLD MARKET

WHOLE FOODS MARKET

CALIFORNIA AVE

10,692 CPD

**SITE - Glendale Plaza**

- SalonCentric
- Banfield PET HOSPITAL
- Western Dental & Orthodontics
- SUPERCUTS
- Coffee Bean Tea Leaf
- Coming Soon: Fix Medical Spa

WILSON AVE

GLENDALE AVE 35,368 CPD

DOLLAR TREE  
CHIPOTLE

CVS

BROADWAY

Glendale Galleria

- macy's
- JCPenney
- bloomingdales
- VICTORIA'S SECRET
- TARGET
- DICK'S SPORTING GOODS
- Apple
- IN-N-OUT BURGER

COLORADO ST

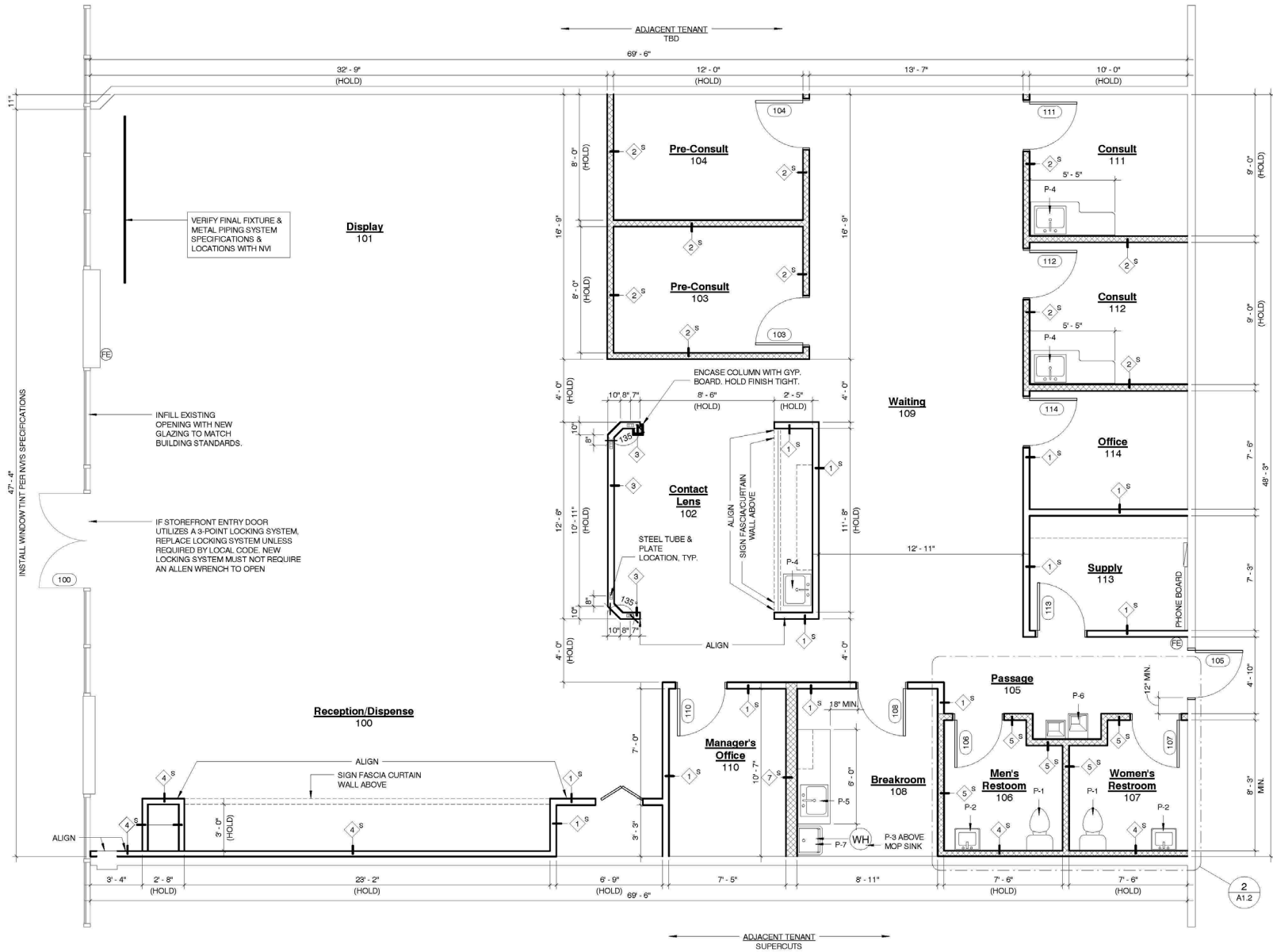
The Americana at Brand  
NORDSTROM BARNES & NOBLE  
The Cheesecake Factory  
AMC THEATRES  
H&M

CENTRAL AVE

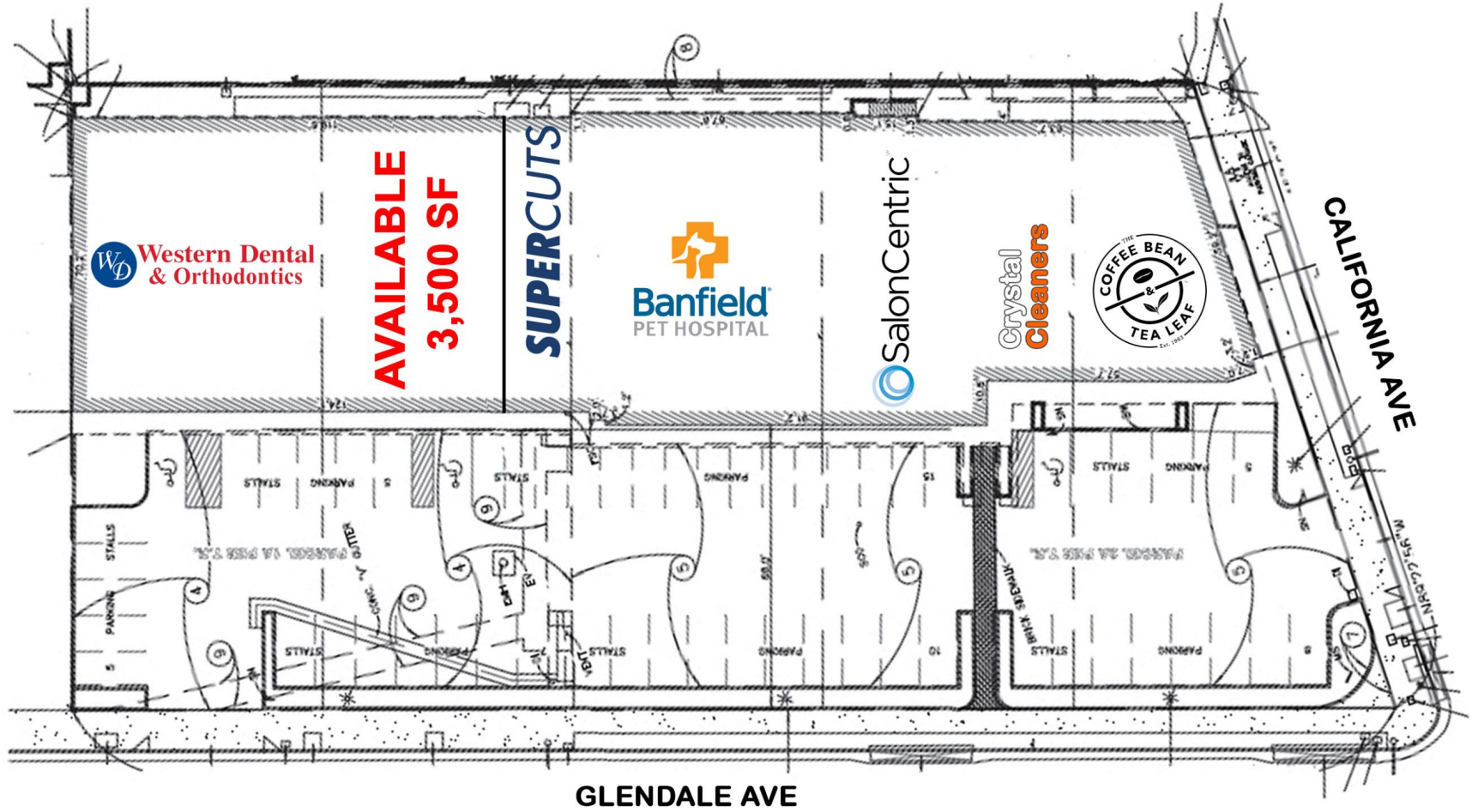
BRAND BLVD

# Floor Plan 3,500 SF

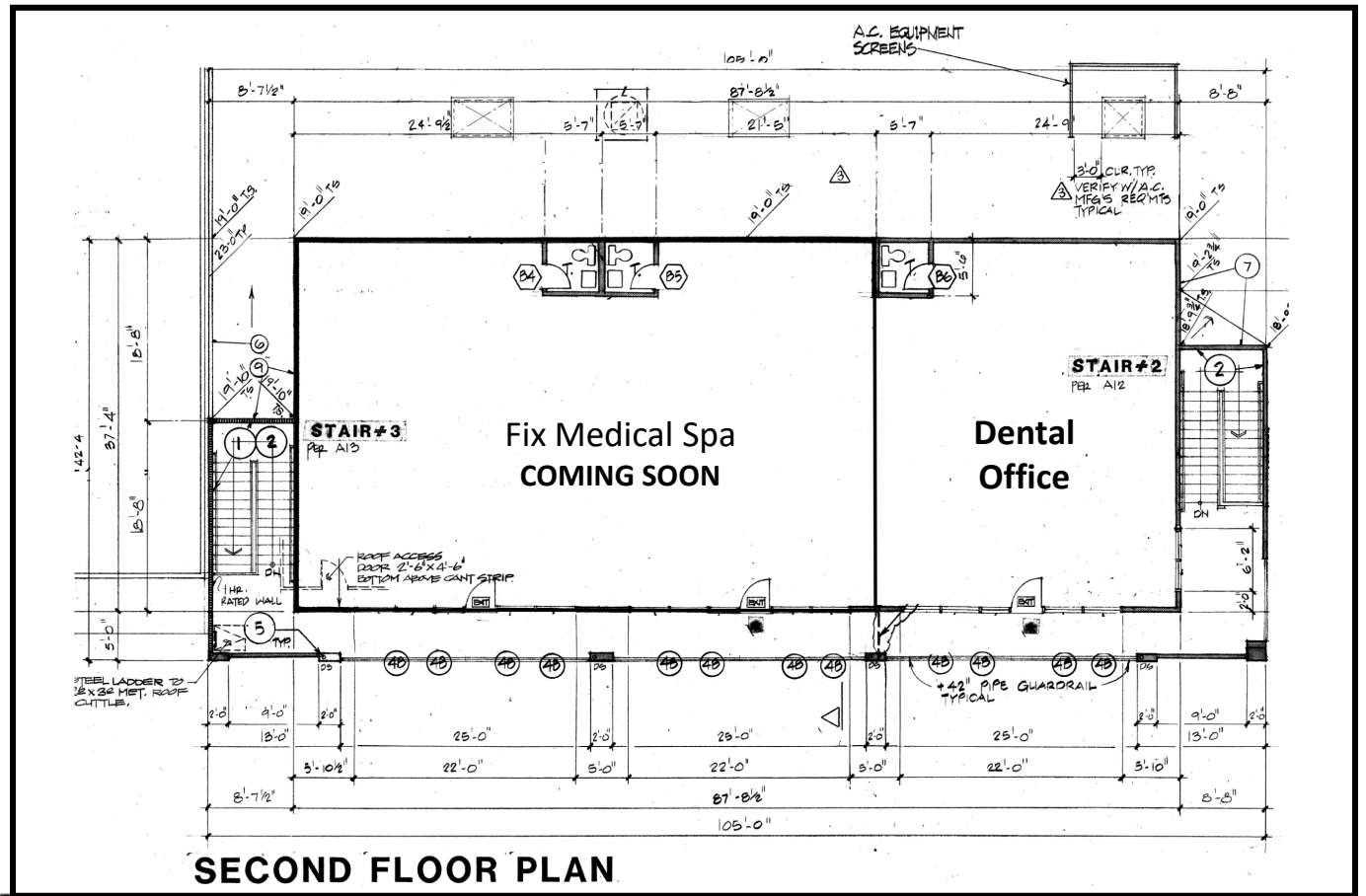
C:\Users\jrk  
5/28/2017  
10:10:53 AM



Site Plan  
Ground Floor



Site Plan  
Second Floor



SECOND FLOOR PLAN



Fix Medical Spa



## Contact Us

### Matt Haas

805.449.1804 ext. 106  
mhaas@cypressretail.net  
License No. 01970296

### Bob Haas

805.449.1804 ext. 103  
rhaas@cypressretail.net  
License No. 00870324



[www.cypress.net](http://www.cypress.net)

**North Office**  
4035 E Thousand Oaks Blvd, Suite 230  
Westlake Village, CA 91362

The information provided herein is intended as a general depiction of the property and is subject to change. This information has been obtained by sources deemed reliable. The information has not been independently verified and Cypress Retail Group and its agents do not warrant or represent that the information provided is accurate. Individuals are solely responsible for verifying information related to the property and its suitability for the individual's use.