

# GLENDALE PLAZA - GLENDALE, CA



● ● ● FOR LEASE  
± 3,500 RETAIL SPACE AVAILABLE





# PROPERTY HIGHLIGHTS



- 3,500 SF retail space available!
- Located across the street from the Glendale Fashion Center and Whole Foods
- Within close proximity of the 134 Fwy (0.35 Miles north of center)
- High visibility location with 31,423 CPD along the major artery of North Glendale Avenue.



## CO - TENANTS



## AREA RETAILERS



### Matt Haas

Vice President

805.449.1804 ext.106

mhaas@cypressretail.net

License No. 01970296

### Bob Haas

Co-Founding Principal

805.449.1804 ext.103

rhaas@cypressretail.net

License No. 00870324

### North Office

4035 E Thousand Oaks Blvd Suite 230  
Westlake Village, CA 91362

www.cypress.net



# 5 - MILE RADIUS TRADE AREA

## Estimated Population

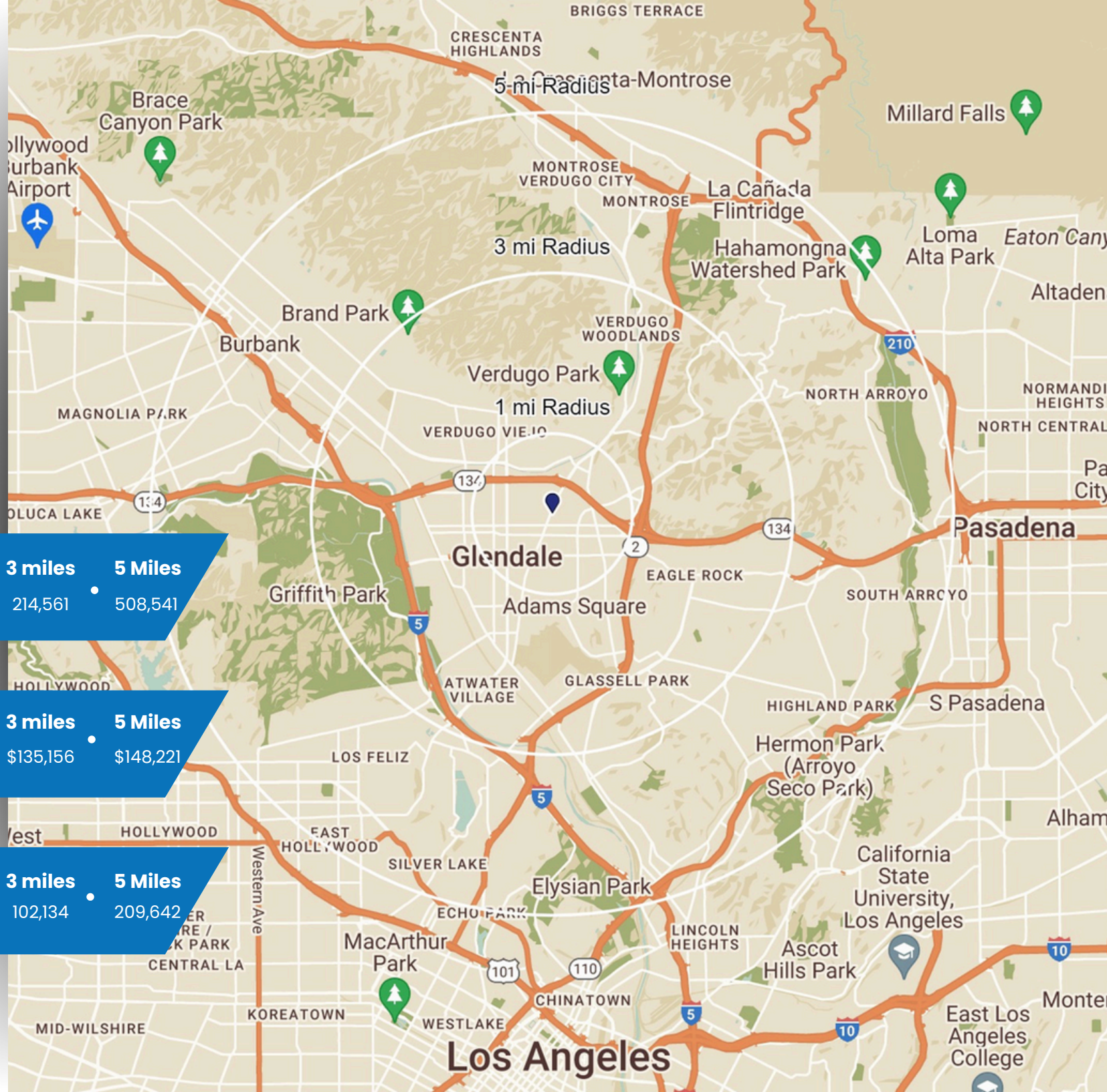
1 Mile	3 miles	5 Miles
58,357	214,561	508,541

## Avg. Household Income

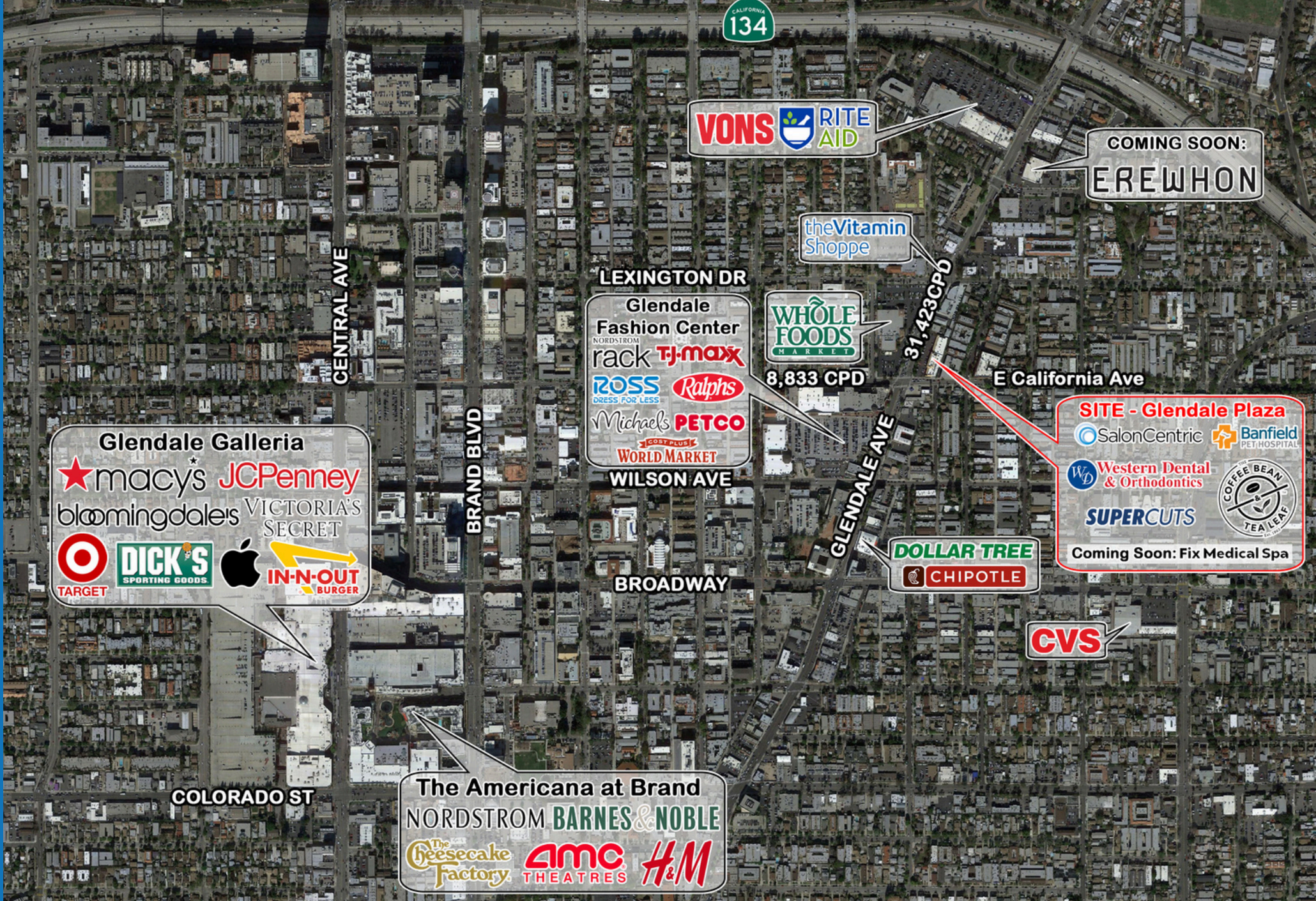
1 Mile	3 miles	5 Miles
\$106,675	\$135,156	\$148,221

## Total Employees

1 Mile	3 miles	5 Miles
44,494	102,134	209,642







**VONS** **RITE AID**

COMING SOON:  
**EREWHON**

theVitamin  
Shoppe

LEXINGTON DR  
Glendale  
Fashion Center  
NORDSTROM  
rack **TJ-maxx**  
**ROSS** **Ralphs**  
DRESS FOR LESS  
Michael's **PETCO**  
COST PLUS  
WORLD MARKET  
WILSON AVE

**WHOLE FOODS MARKET**  
8,833 CPD

31,423CPD

E California Ave

Glendale Galleria  
★ **macys** **JCPenney**  
**bloomingdale's** **VICTORIA'S SECRET**  
**TARGET** **DICK'S SPORTING GOODS** **Apple** **IN-N-OUT BURGER**

**SITE - Glendale Plaza**  
**SalonCentric** **Banfield PET HOSPITAL**  
**Western Dental & Orthodontics** **COFFEE BEAN TEA LEAF**  
**SUPERCUTS**  
Coming Soon: Fix Medical Spa

**DOLLAR TREE**  
**CHIPOTLE**

**CVS**

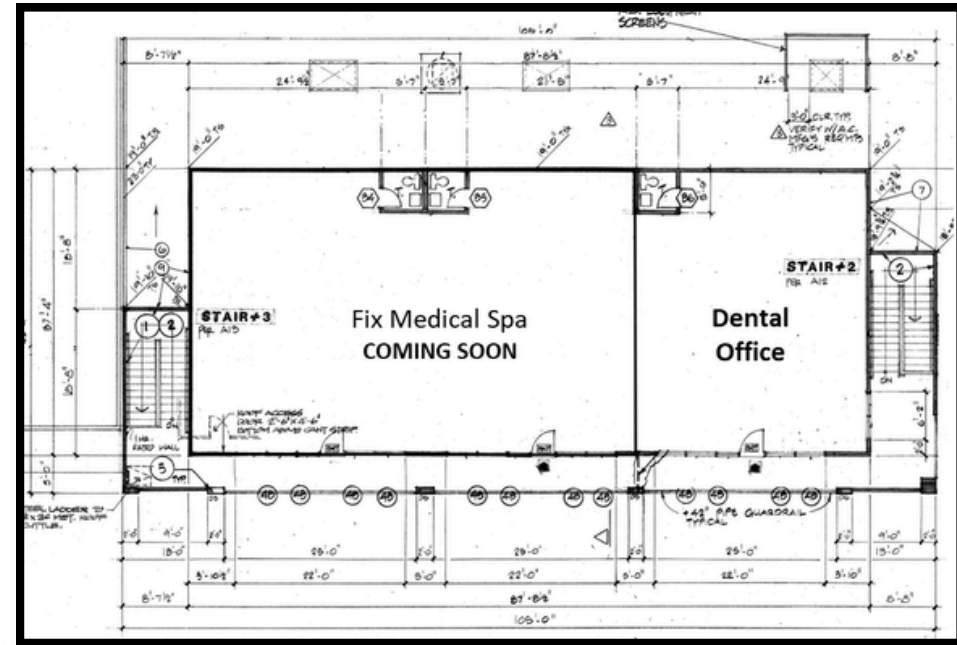
COLORADO ST

The Americana at Brand  
NORDSTROM **BARNES & NOBLE**  
**The Cheesecake Factory** **AMC THEATRES** **H&M**

**AERIAL**



# SITE PLAN









# CONTACT US



**Matt Haas**

Vice President

805.449.1804 ext.106

[mhaas@cypressretail.net](mailto:mhaas@cypressretail.net)

License No. 01970296



**Bob Haas**

Co-Founding Principal

805.449.1804 ext.103

[rhaas@cypressretail.net](mailto:rhaas@cypressretail.net)

License No. 00870324

## North Office

4035 E Thousand Oaks Blvd Suite 230  
Westlake Village, CA 91362

[www.cypress.net](http://www.cypress.net)

NORTH OFFICE

SOUTH OFFICE

The information provided herein is intended as a general depiction of the property and is subject to change. This information has been obtained by sources deemed reliable. The information has not been independently verified and Cypress Retail Group and its agents do not warrant or represent that the information provided is accurate. Individuals are solely responsible for verifying information related to the property and its suitability for the individual's use.