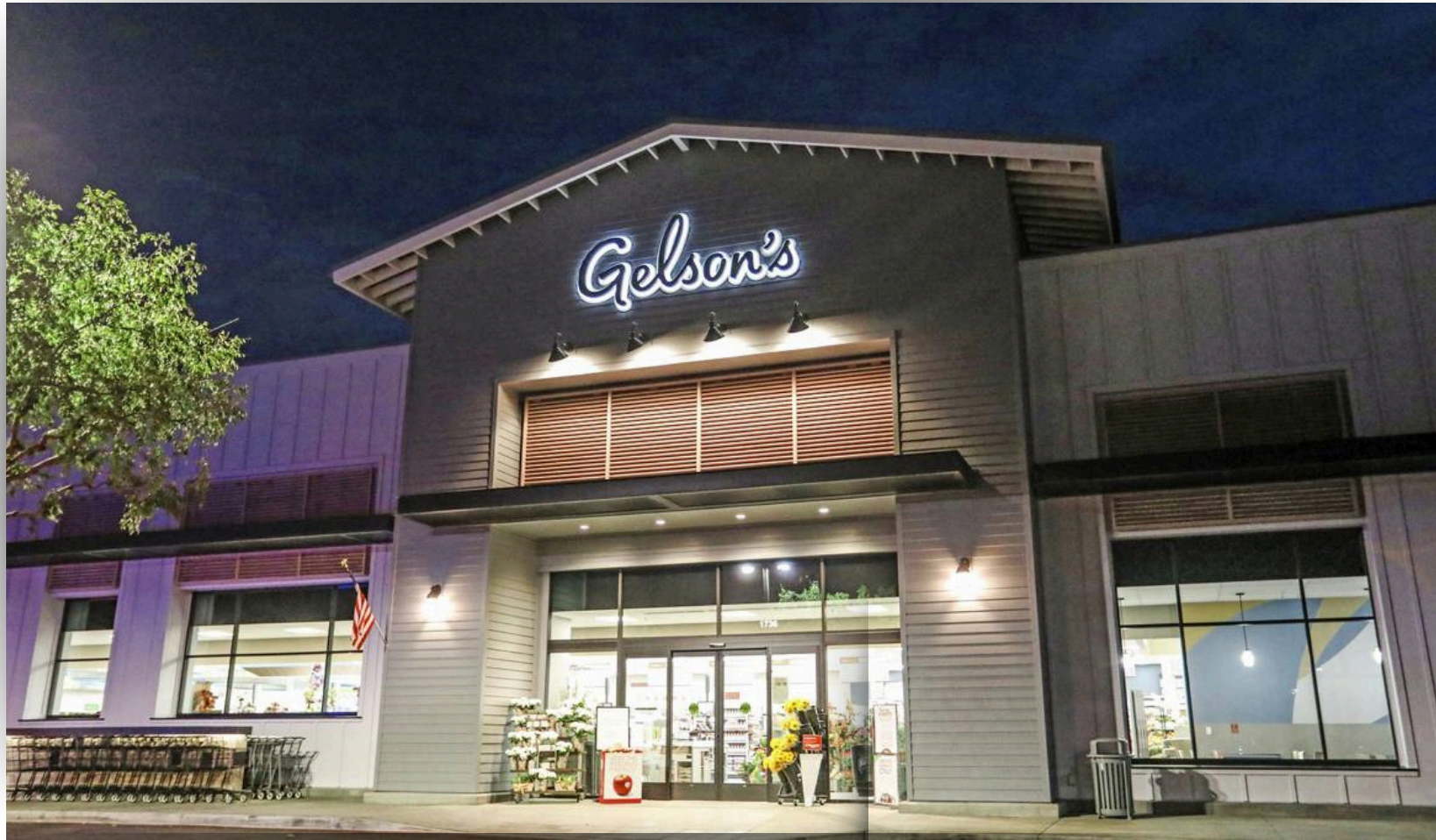


OAKBROOK PLAZA, THOUSAND OAKS



FOR LEASE

±600 - ±2,975 SF AVAILABLE



PROPERTY HIGHLIGHTS

- ▶ ±600 SF – ±2,975 SF in-line spaces available
- ▶ Approximately 2.9 Million Visits in the last 12 months (Placer.ai 2026)
- ▶ Gelson's anchored shopping center and shadow anchored by Ace Hardware, CVS, and Vons
- ▶ Centrally located within Conejo Valley Trade Area
- ▶ Immediately adjacent to 23 Freeway



Estimated Population

1 Mile	3 miles	5 Miles
11,725	73,057	154,641

Avg. Household Income

1 Mile	3 miles	5 Miles
\$191,199	\$173,628	\$186,185

Total Employees

1 Mile	3 miles	5 Miles
2,296	27,449	87,003

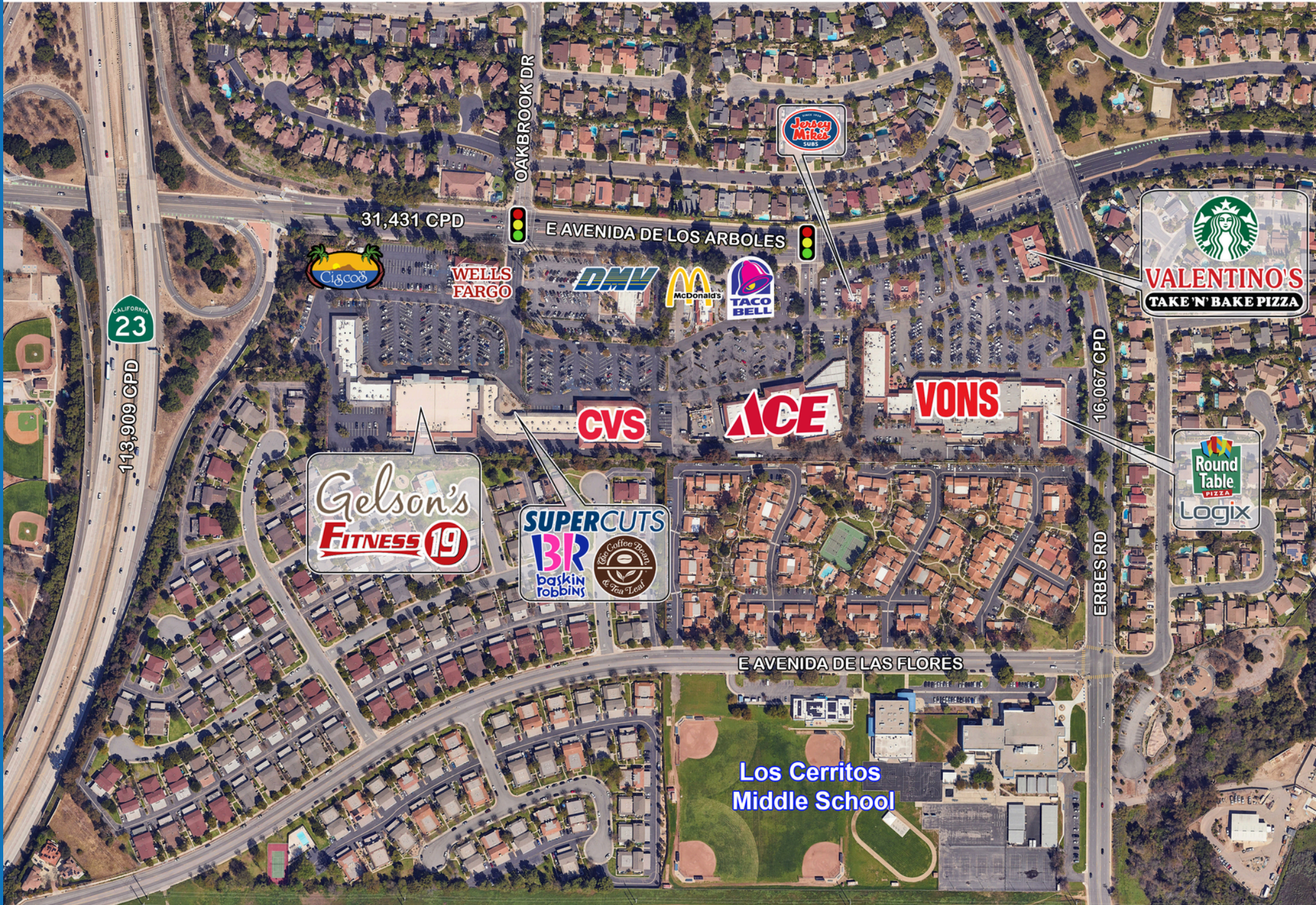
CO-TENANTS:



AREA RETAILERS:



SITE AERIAL



SITE PLAN



Tenant	Unit	SF
Gelson's Market	1	35,289
Fitness 19	2	8,553
Cafe Vivi	1724 A	3,696
Games Workshop	1724 D	900
Available (Fitness Space)	1724 D1	2,807
Ameci's Pizza & Pasta	1724 G1	3,060
CorePower Yoga	1730 AB	3,000
Available Soon (Do Not Disturb Tenant)	1730 C	1,026
Tifa Chocolate & Gelato	1730 D	1,213
Available	1730 E	1,575
Plaza Cleaners	1730 F	1,350
Coffee Bean & Tea Leaf	1772 A	1,400
Sole Soups	1772 B	800
Available	1772 C*	800
Available	1772 D*	600
Available	1772 E*	1,575
Animal Hospital	1772 F	2,000
LaserAway	1772 G	1,650
Supercuts	1772 H	1,250
JÜGO Bar	1772 I	900
Wateria	1772 J	900
Available Soon (Restaurant)	1772 K	960
Club Pilates	1772 M	2,040
Jazzy Nails & Spa	1772 O	1,500
Baskin-Robbins	1772 P	1,500
European Wax Center	1772 Q	1,500
Health Source (Coming Soon)	1772 R	1,500



***Spaces 1772 C, 1772 D, & 1772 E can be combined for up to ≈2,975 SF**



Matt Haas
Vice President

805.449.1804 ext.106

mhaas@cypressretail.net

License No. 01970296

Anna-Kay Earle
Associate

805.449.1804 ext.107

aearle@cypressretail.net

License No. 02241530



North Office

4035 E Thousand Oaks Blvd Suite 230
Westlake Village, CA 91362

Commercial Real Estate Brokerage • Landlord/Tenant Representation • Consulting Services

www.cypress.net